

Nokia Lumia 930

RM-1045

Key features

- 2.2 GHz Quad core processor
- 5" Full-HD OLED Display
- 32 GB Internal memory
- 20 MP Nokia PureView camera
- Integrated wireless charging

Version 1.0

Send feedback

- Recommend Change in KICS
- Rate this page in KICS
- E-mail careacademy@nokia.com



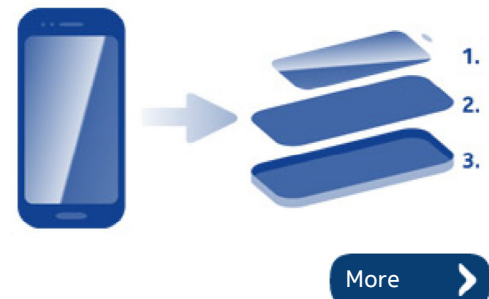
CHECK THE REPAIR POLICY BEFORE PERFORMING ANY MECHANICAL REPAIR ON SERVICE LEVEL 1&2!

Exploded view



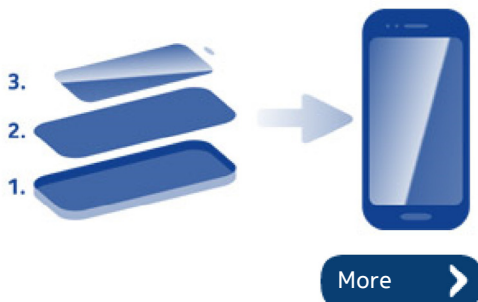
More >

Disassembly steps



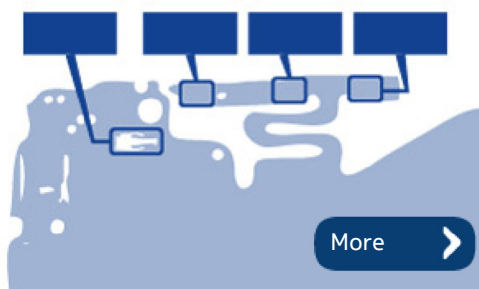
More >

Assembly hints



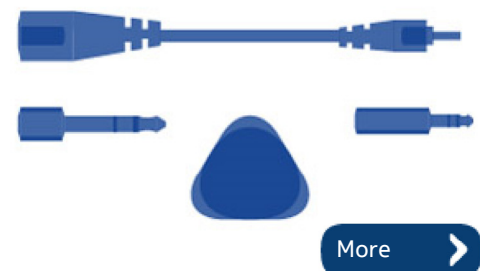
More >

Solder components



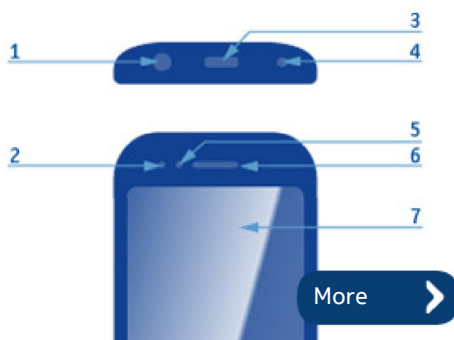
More >

Service devices



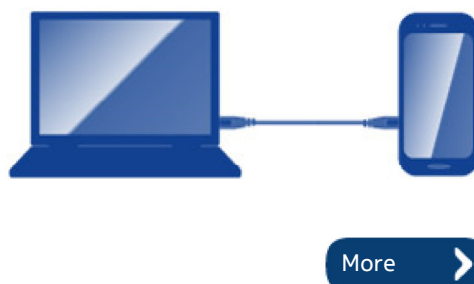
More >

Product controls and interfaces



More >

Service concept



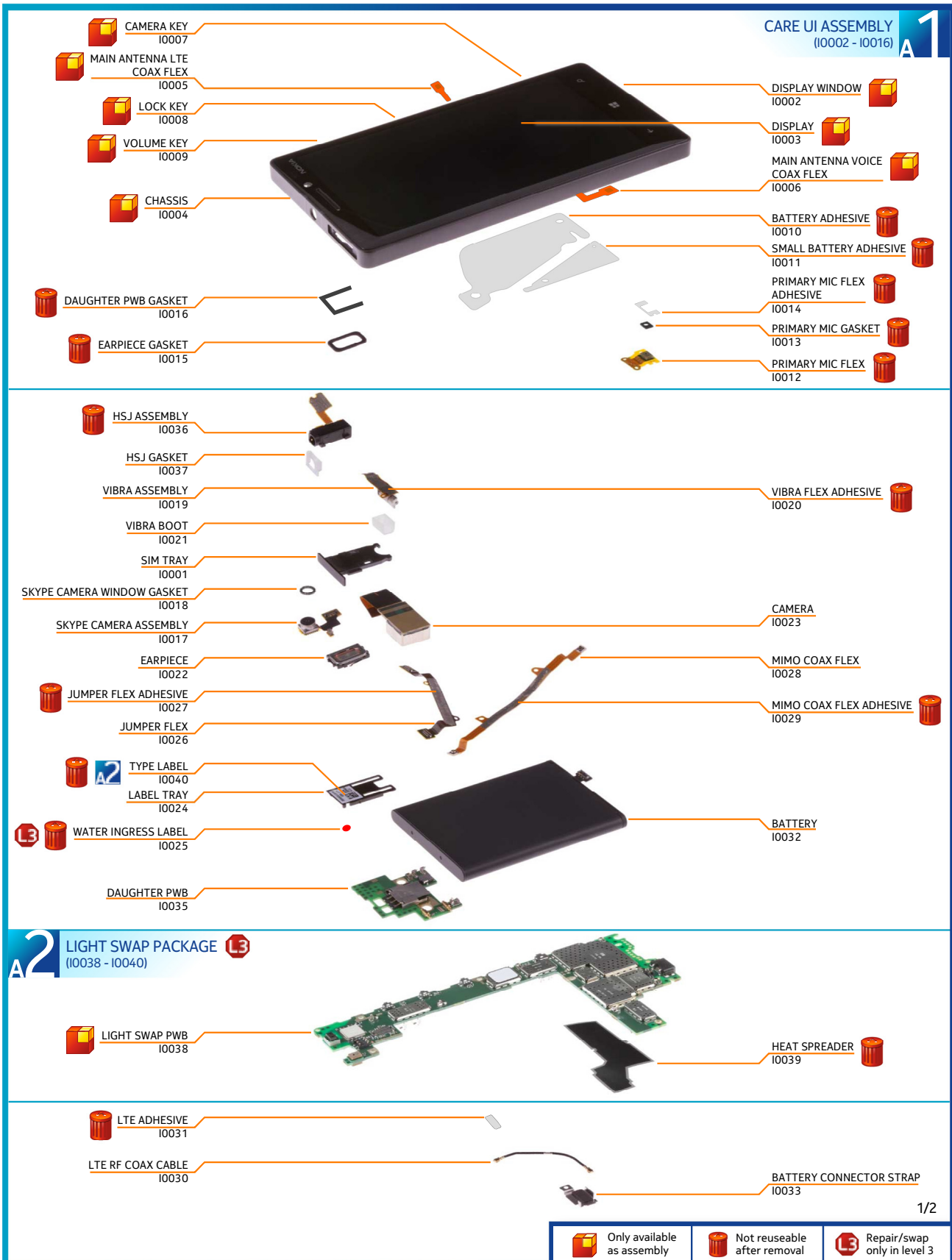
More >

Phone reset

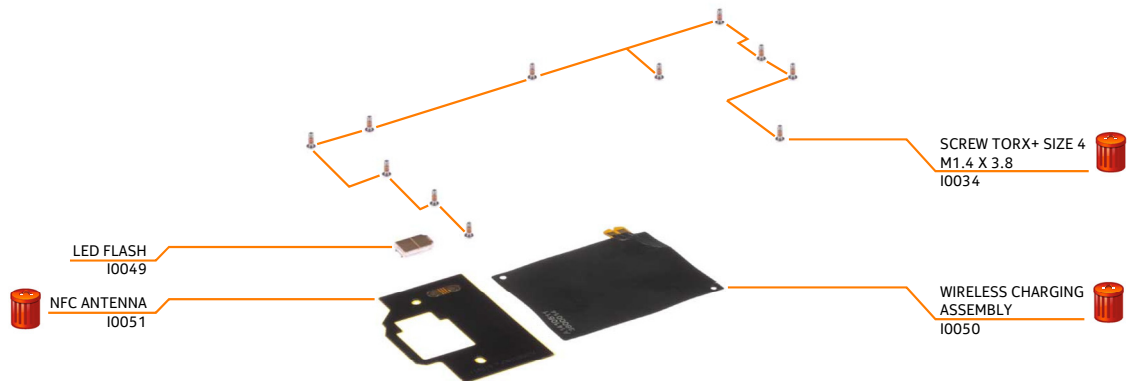


More >

Version	Date	Description
1.0	29.05.2014	First published version




A3 ENGINE COVER ASSEMBLY (I0041 - I0045)




A4 BACK COVER ASSEMBLY (I0046 - I0048)



2/2

 Only available as assembly

 Not reuseable after removal

 Repair/swap only in level 3



1) For disassembling you need the Nokia Standard toolkit version 2. You will also need the SS-311 back cover release tool, the SS-319 RF-connector disassembly/assembly tool and an AV jack.

Note that the device shown in most of these pictures is the Nokia Lumia Icon. On those steps the spare parts and the disassembly procedures are the same.



2) Protect the DISPLAY WINDOW with protective film.



3) Open the SIM TRAY with the SS-93 and pull it out.



4) At this point, if you only want to check the TYPE LABEL without having to disassemble the phone, you can pull the LABEL TRAY out with the hook on the SIM TRAY.



5) Release the BACK COVER with the SS-311 from the shown corner.



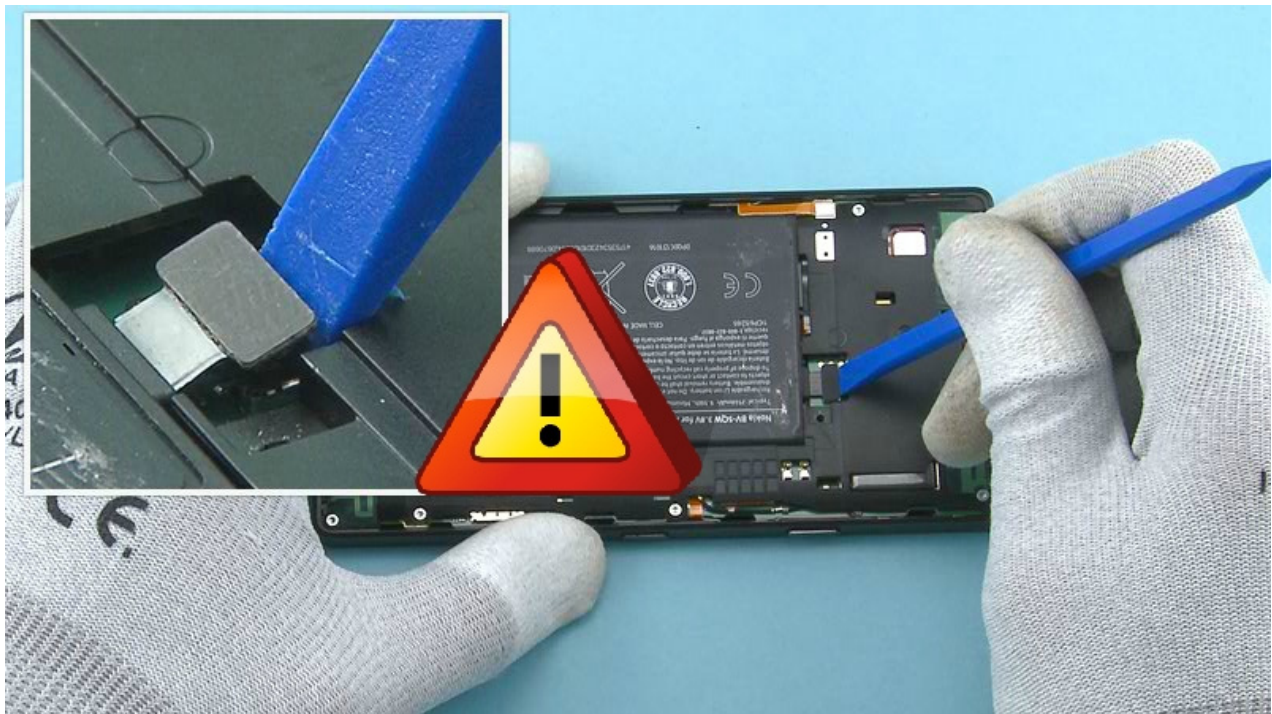
6) Remove the BACK COVER.



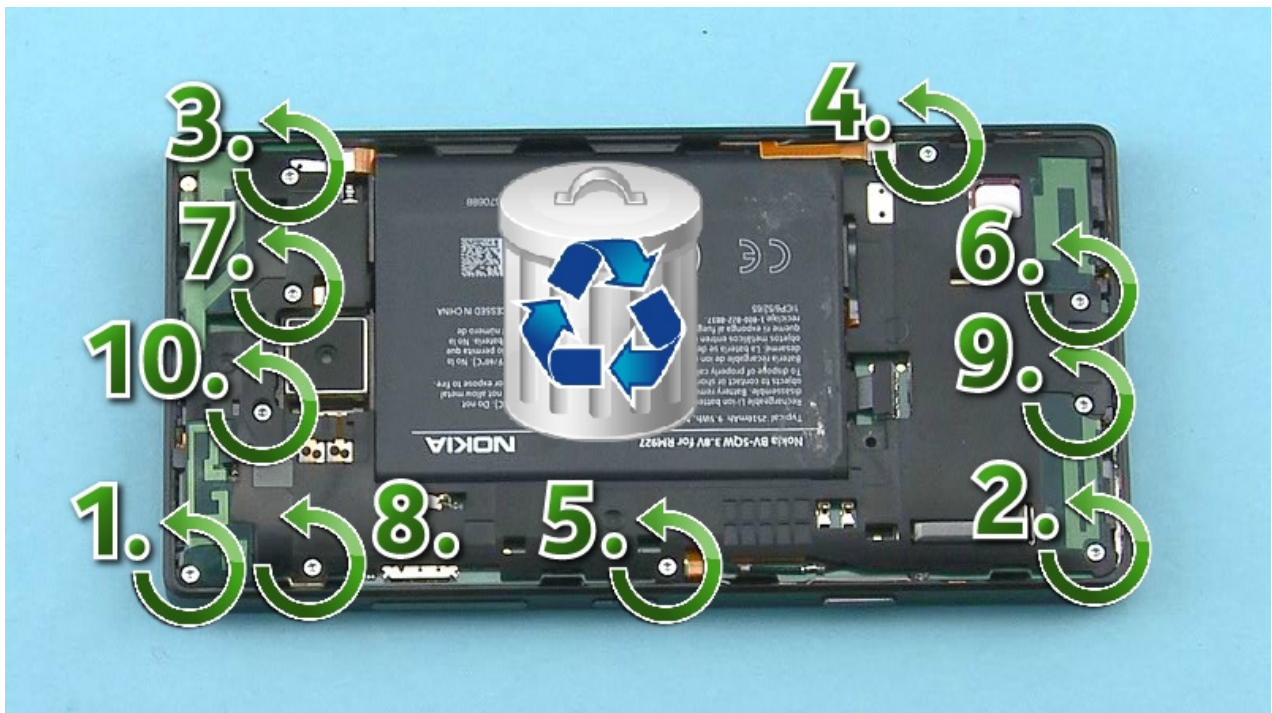
7) Unscrew the TORX+ SIZE 4 screw on top of the BATTERY CONNECTOR STRAP. Do not use the screw again. Discard it.



8) Remove the BATTERY CONNECTOR STRAP with tweezers.



9) Disconnect the BATTERY connector with the SS-93. Be careful not to damage the connector.



10) Unscrew the ten TORX+ SIZE 4 screws in the order shown. Do not use the screws again. Discard them.



11) Release the ENGINE COVER ASSEMBLY from the shown place with the SS-93.



12) Lift up and remove the ENGINE COVER ASSEMBLY top end first. Be careful not to damage the antenna spring contacts on the bottom of the ENGINE COVER ASSEMBLY.

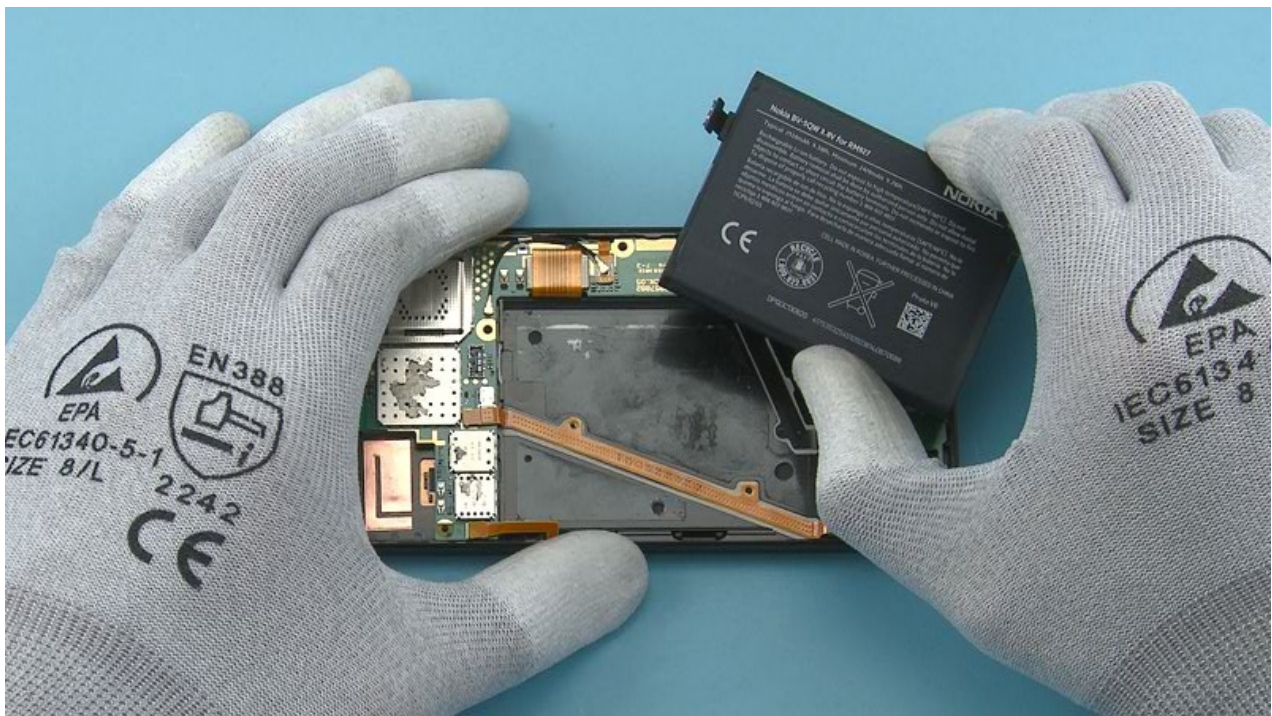


13) Remove the HEAT SPREADER with tweezers. Do not use it again. Discard it.

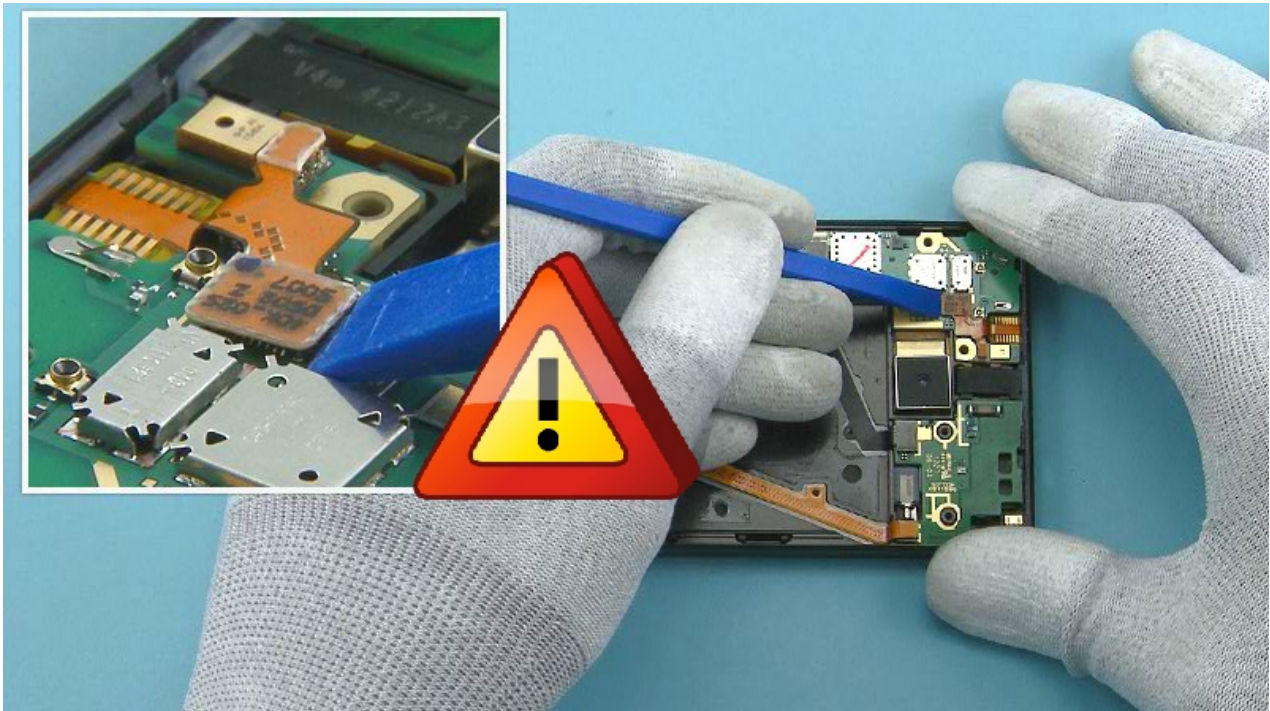
Note that the HEAT SPREADER needs to be removed completely ONLY when the ENGINE BOARD requires repair work.



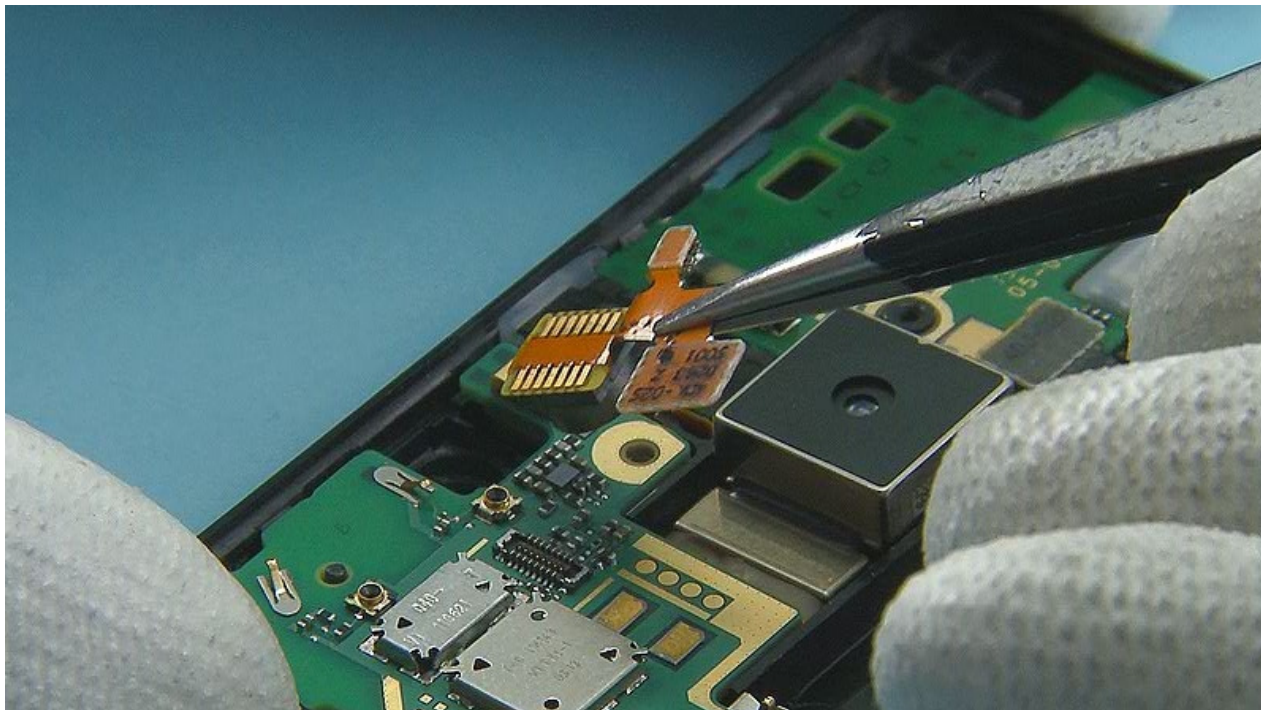
14) Release the BATTERY from the shown place with the SS-93. Be careful not to damage the two flexes located under the BATTERY.



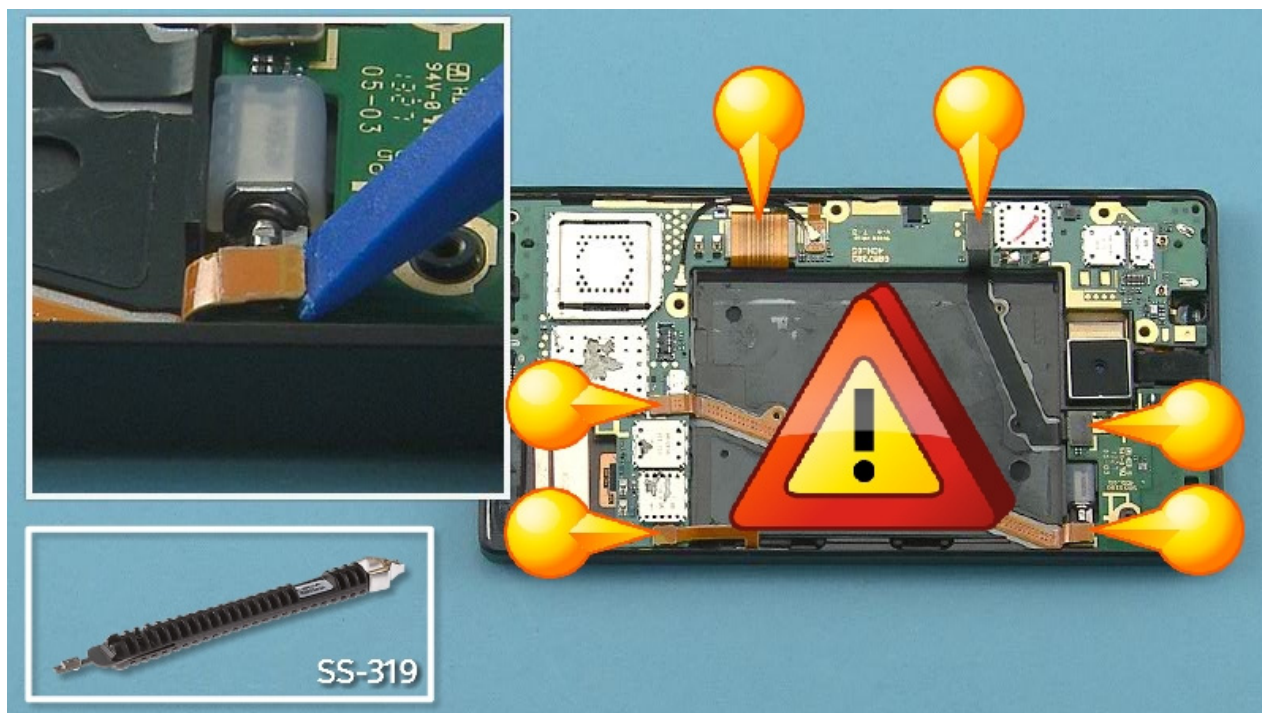
15) Remove the BATTERY.



16) Disconnect the SKYPE CAMERA connector from the shown edge with the SS-93. Be careful not to damage the connector or any components nearby.

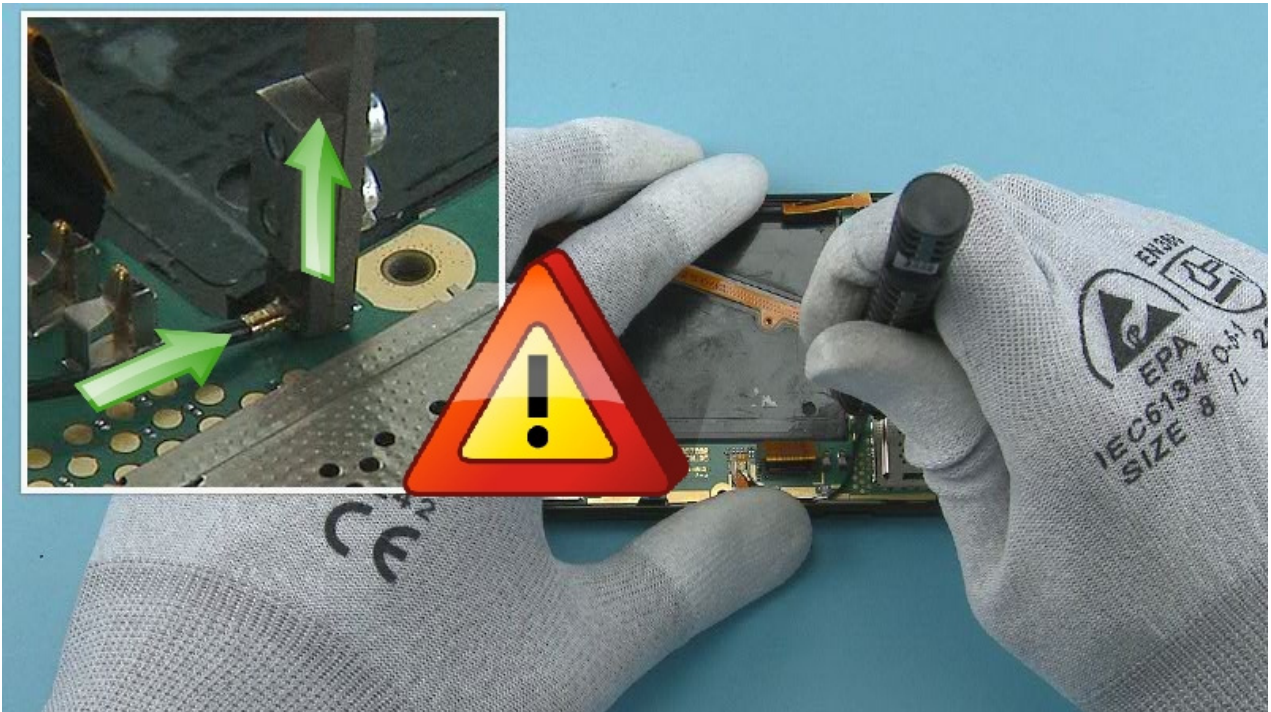


17) Remove the SKYPE CAMERA with tweezers.

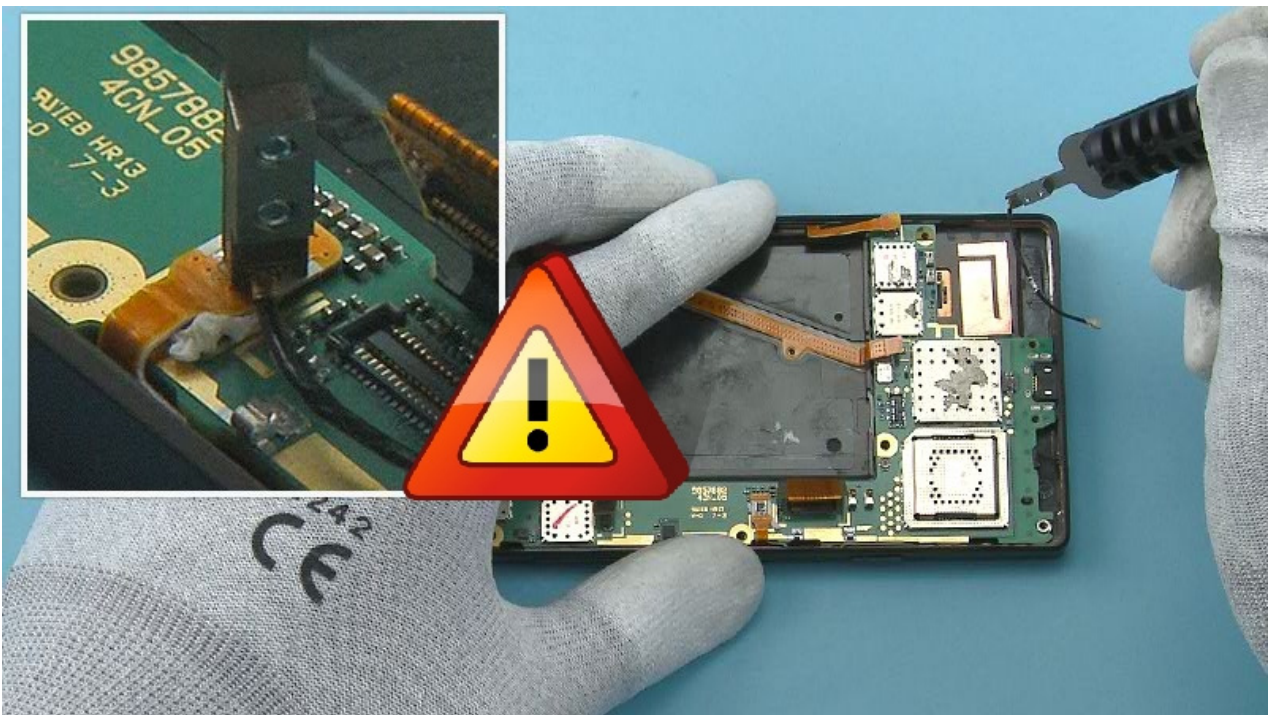


18) Disconnect the six shown connectors with the SS-93. Be careful not to damage the connectors or any components nearby.

Note that the SS-319 can also be used to disconnect the connectors.



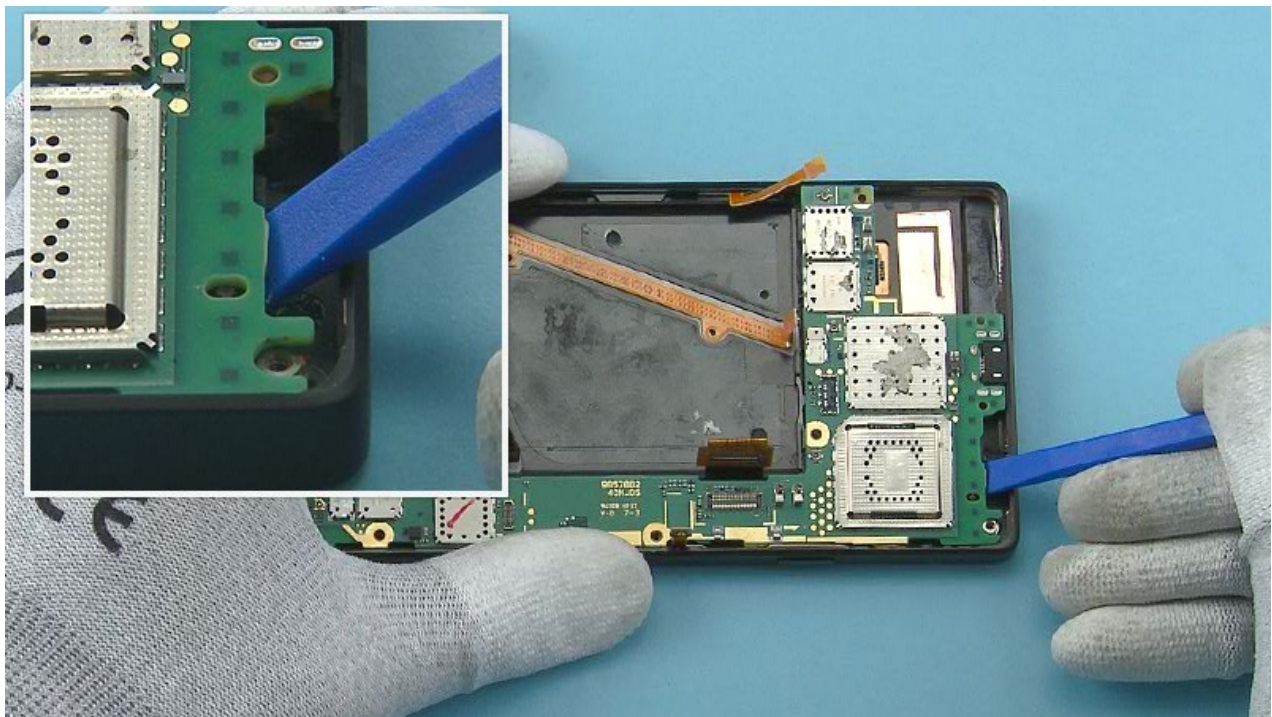
19) Release the RF CABLE connector with the SS-319. Lock the SS-319 to the top of the connector as shown and lift it up carefully. Be careful not to damage the connector.



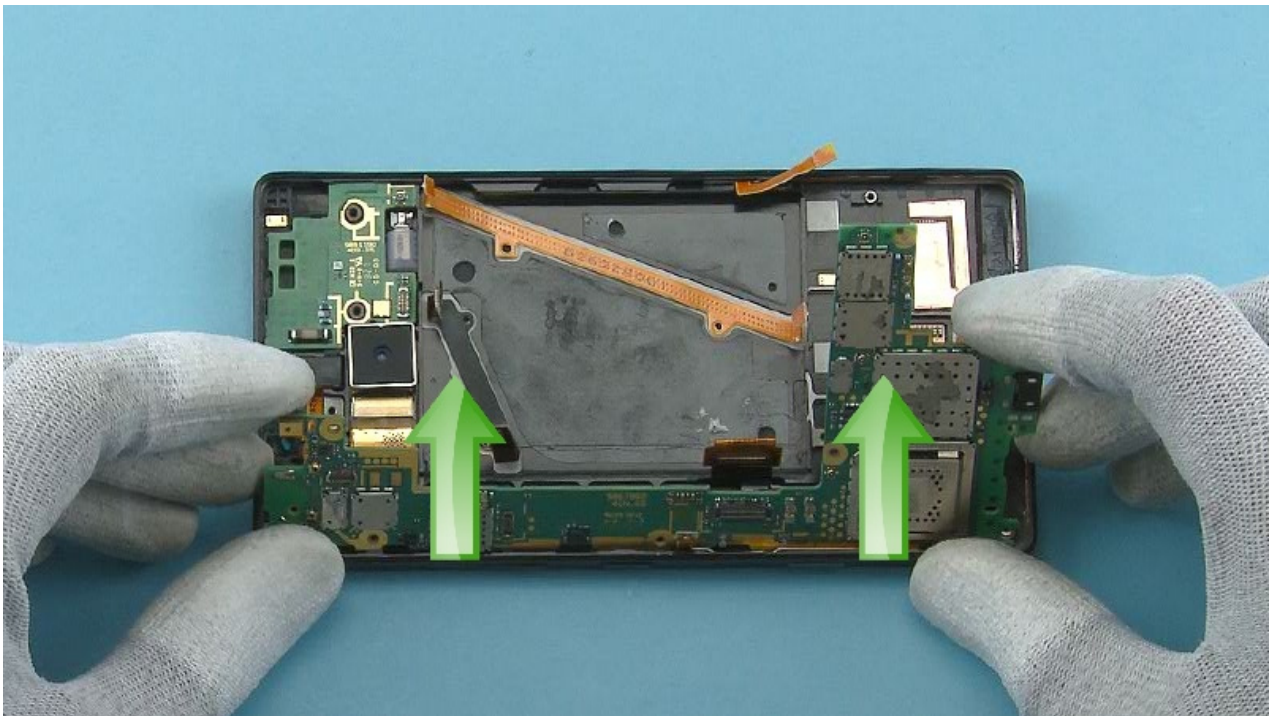
20) Release also the other end of the RF CABLE and remove it.



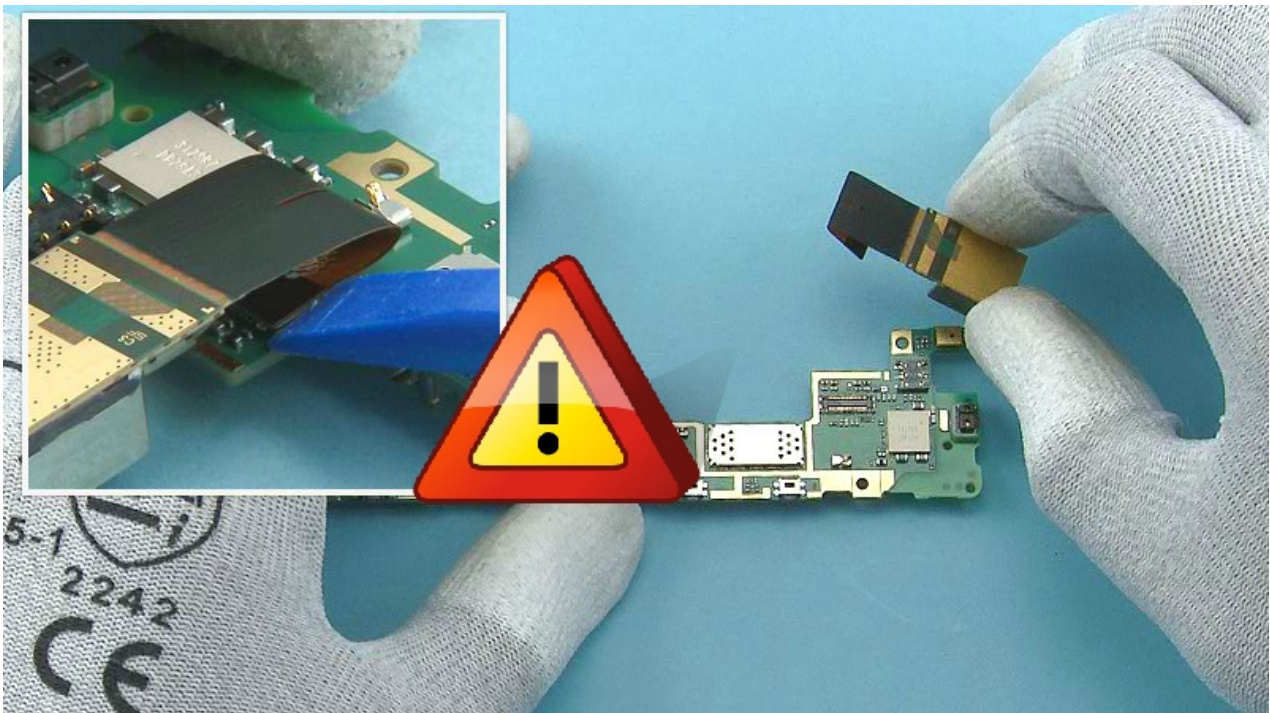
21) Pull the LTE ADHESIVE to the direction shown to remove it under the LTE FLEX. Do not use it again. Discard it.



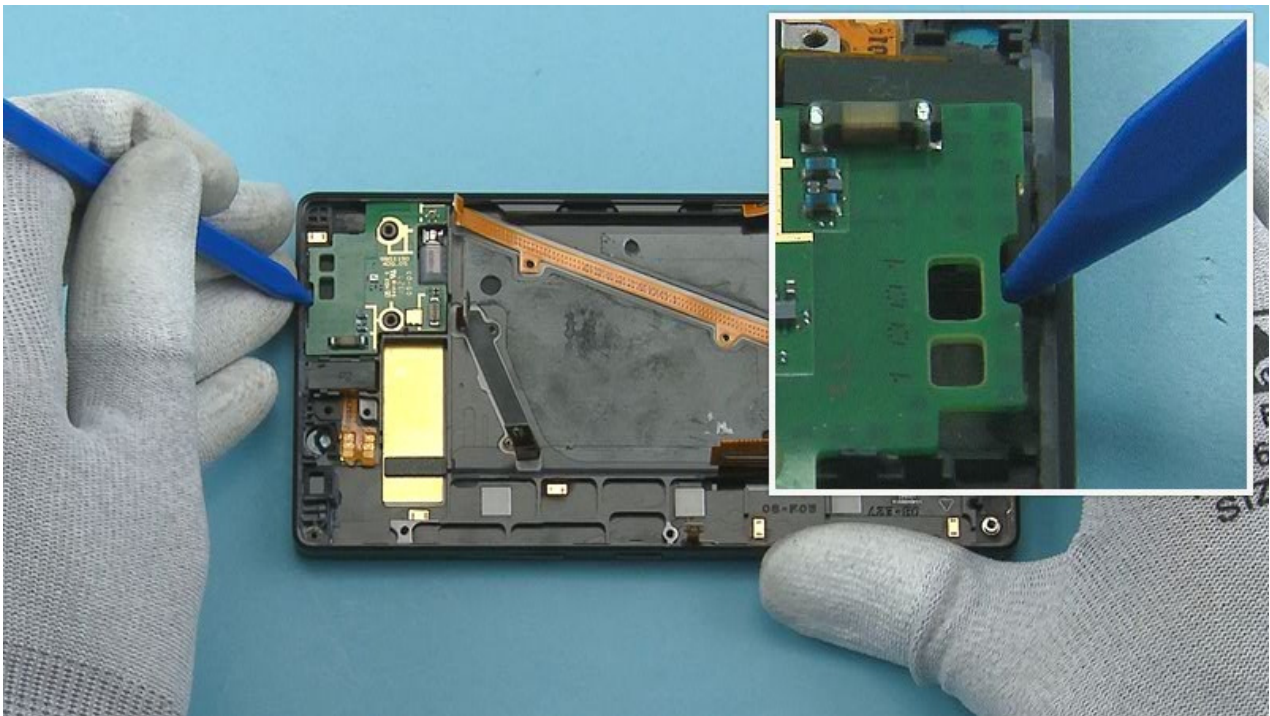
22) Release the ENGINE BOARD from the shown place with the SS-93.



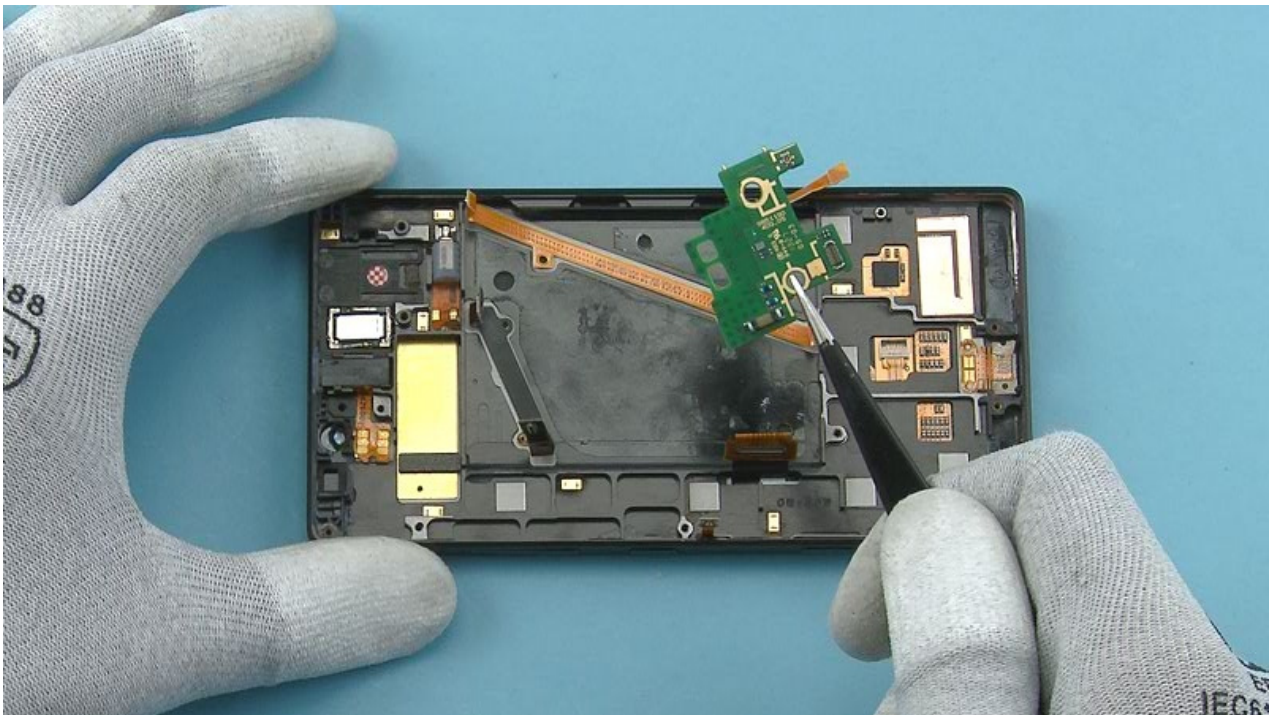
23) Lift up the other side and remove the ENGINE BOARD to the direction shown.



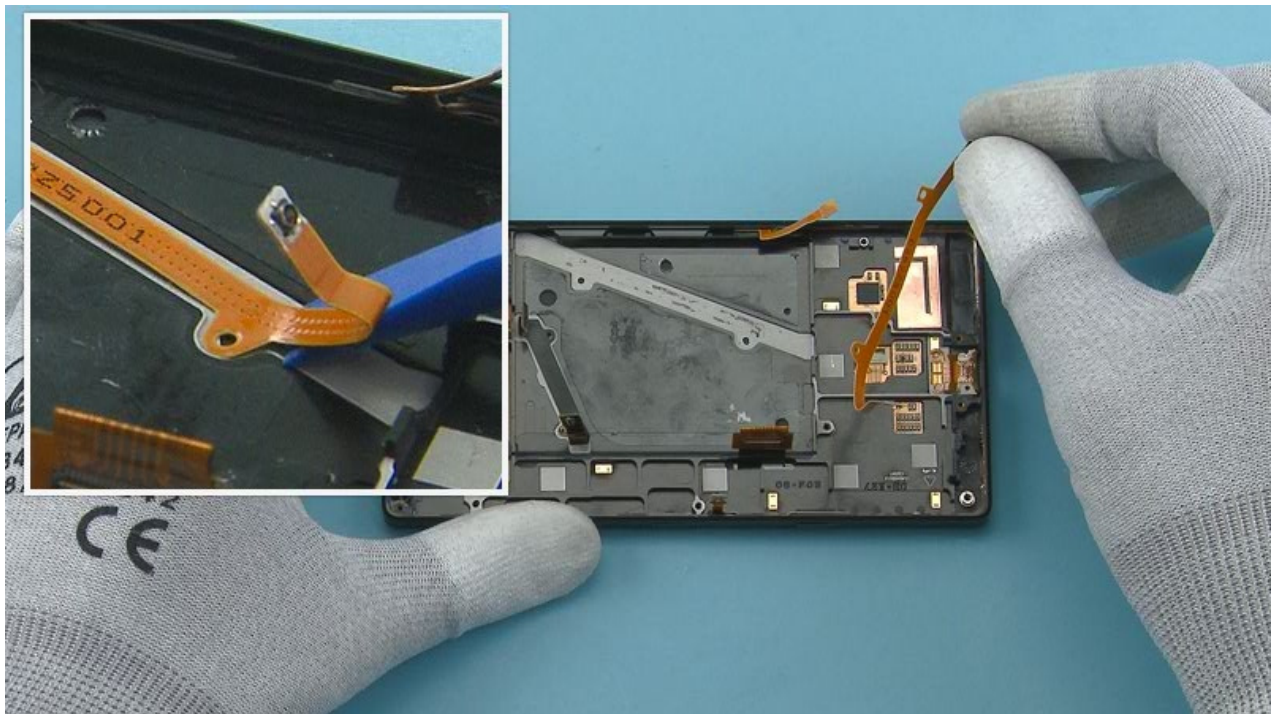
24) Disconnect the CAMERA connector from the shown edge with the SS-93. Be careful not to damage the connector or any components nearby. Remove the CAMERA.



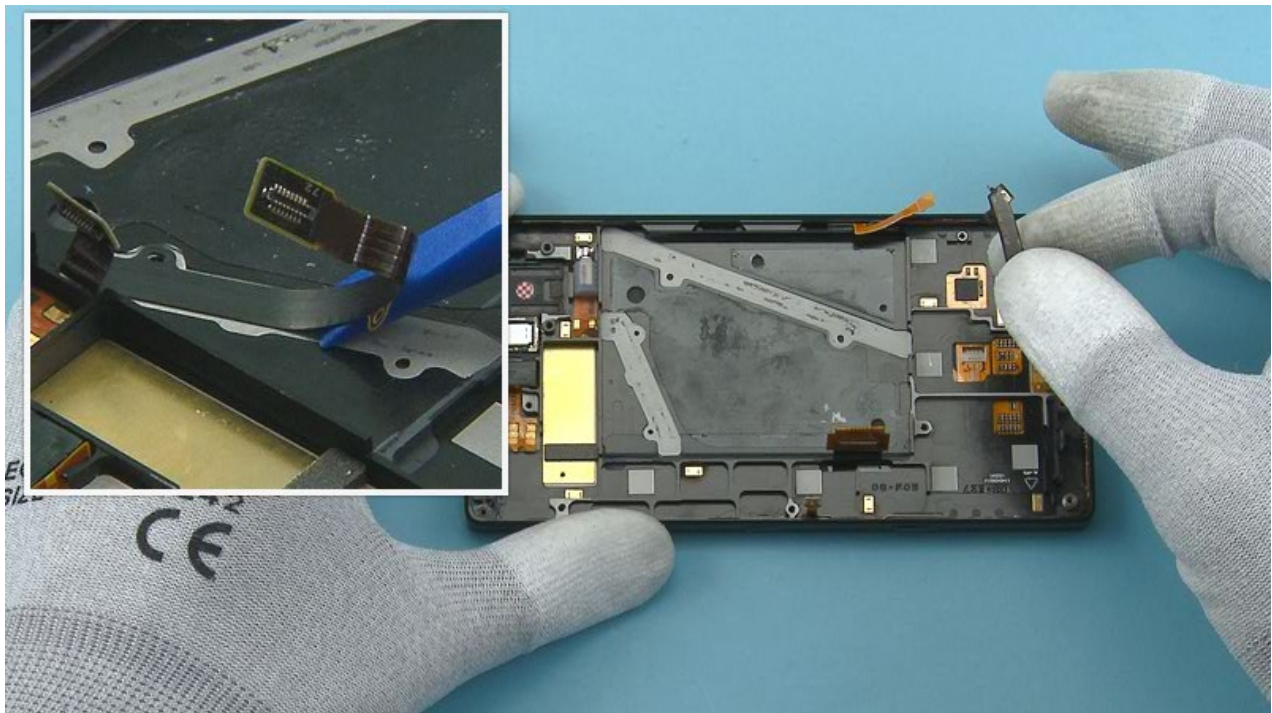
25) Release the DAUGHTER ENGINE BOARD from the shown place with the sharp end of the SS-93.



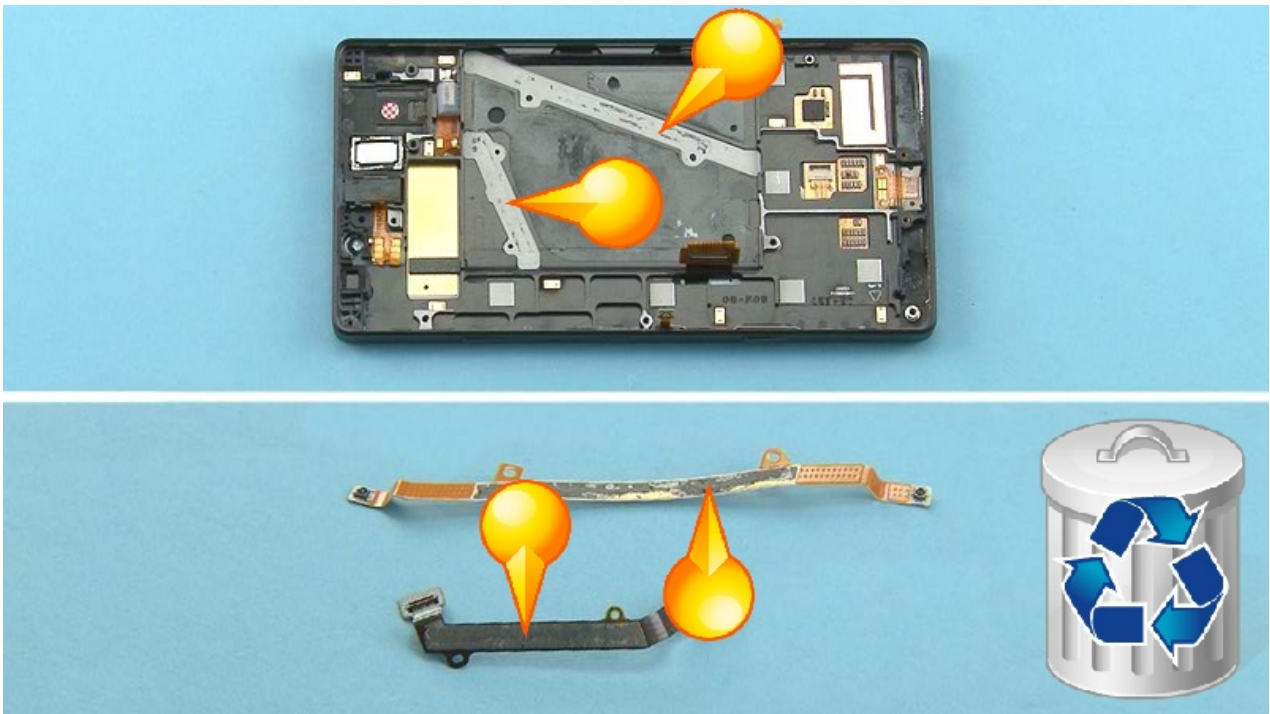
26) Remove the DAUGHTER ENGINE BOARD.



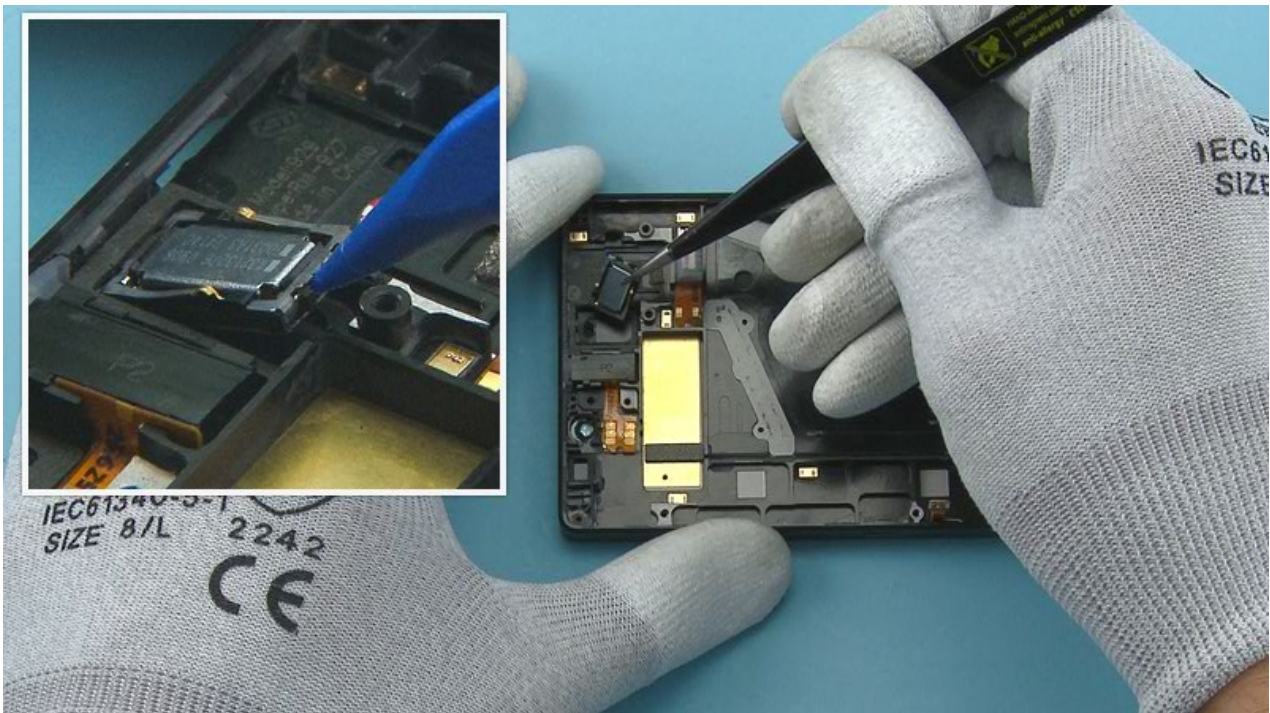
27) Peel off the MIMO COAX FLEX with the SS-93.



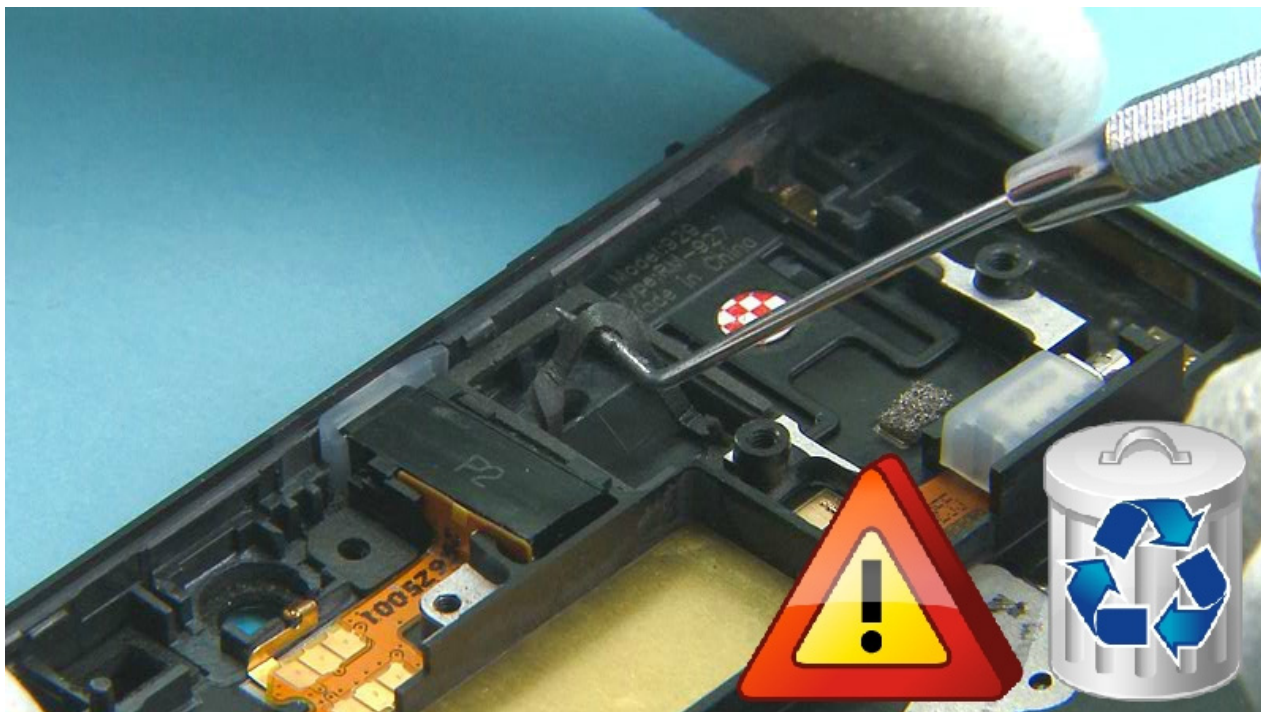
28) Peel off the JUMPER FLEX with the SS-93.



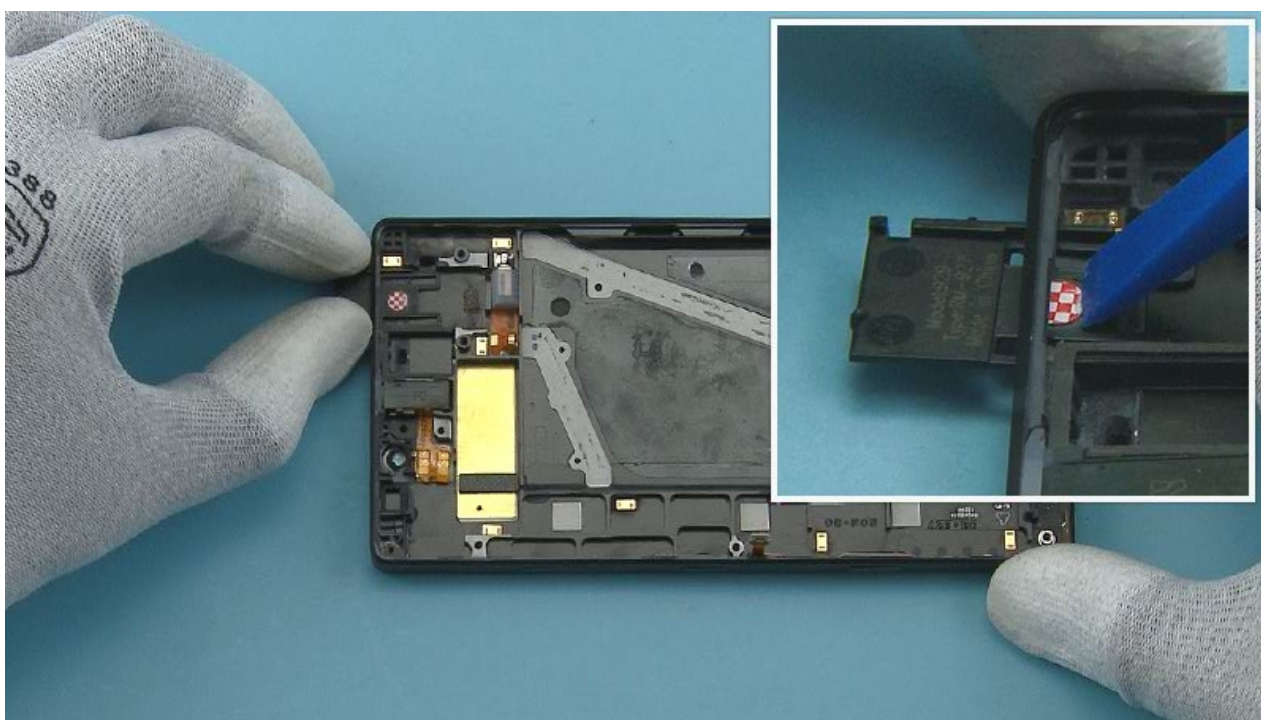
29) If the UI ASSEMBLY or the flexes are being reused, peel off and discard any adhesive residue.



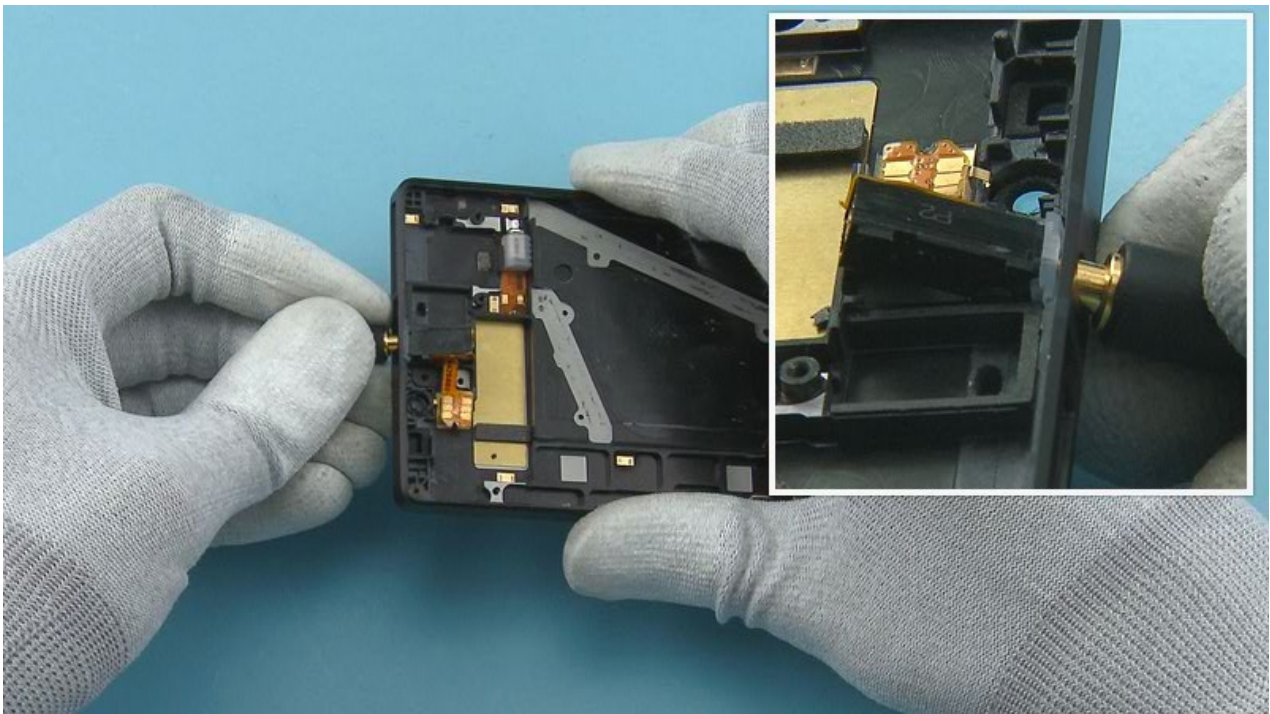
30) Release the EARPIECE with the SS-93 and remove it with tweezers.



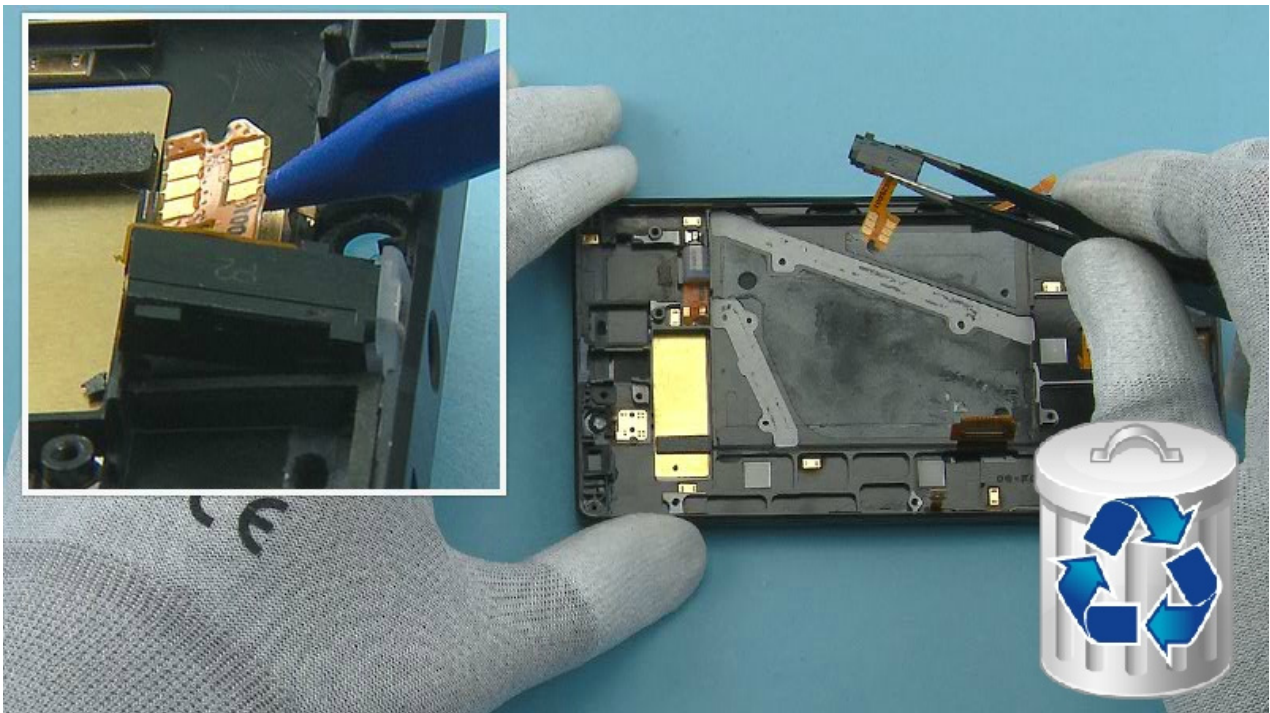
31) Remove and discard the EARPIECE GASKET with the dental tool. Be careful not to injure yourself with the sharp end of the dental tool.



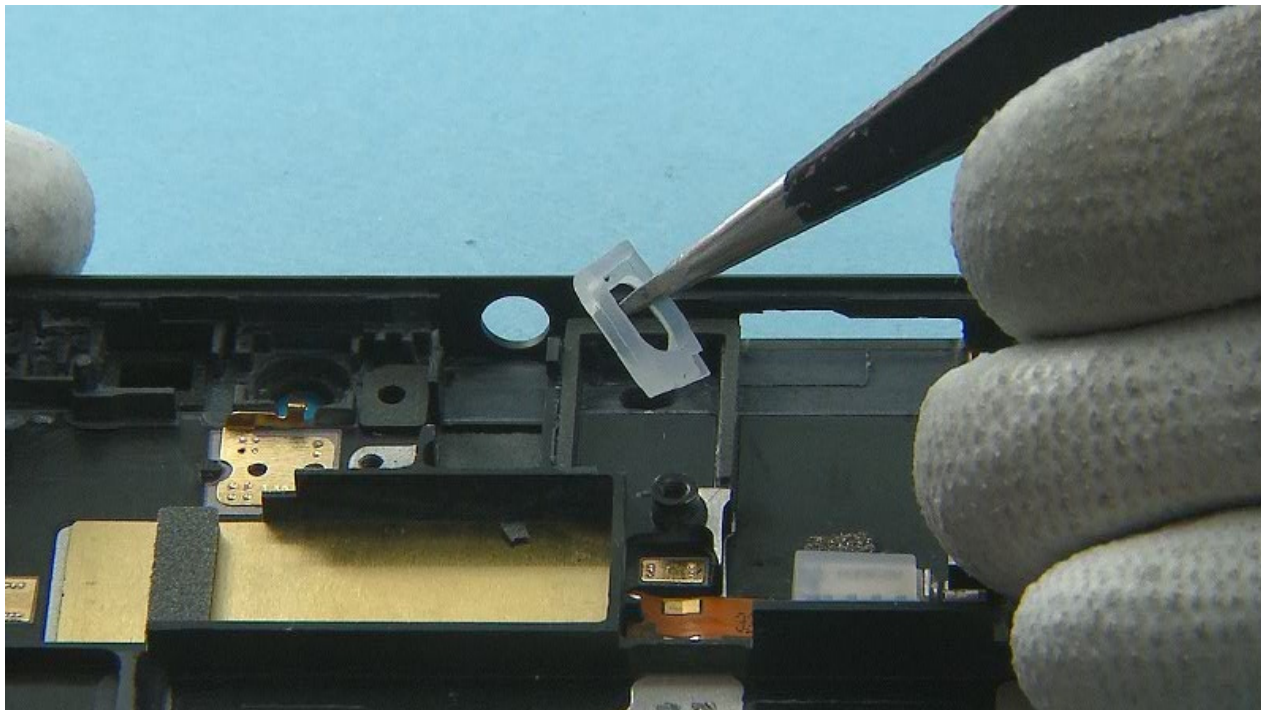
32) Push out the LABEL TRAY with the SS-93 and remove it.



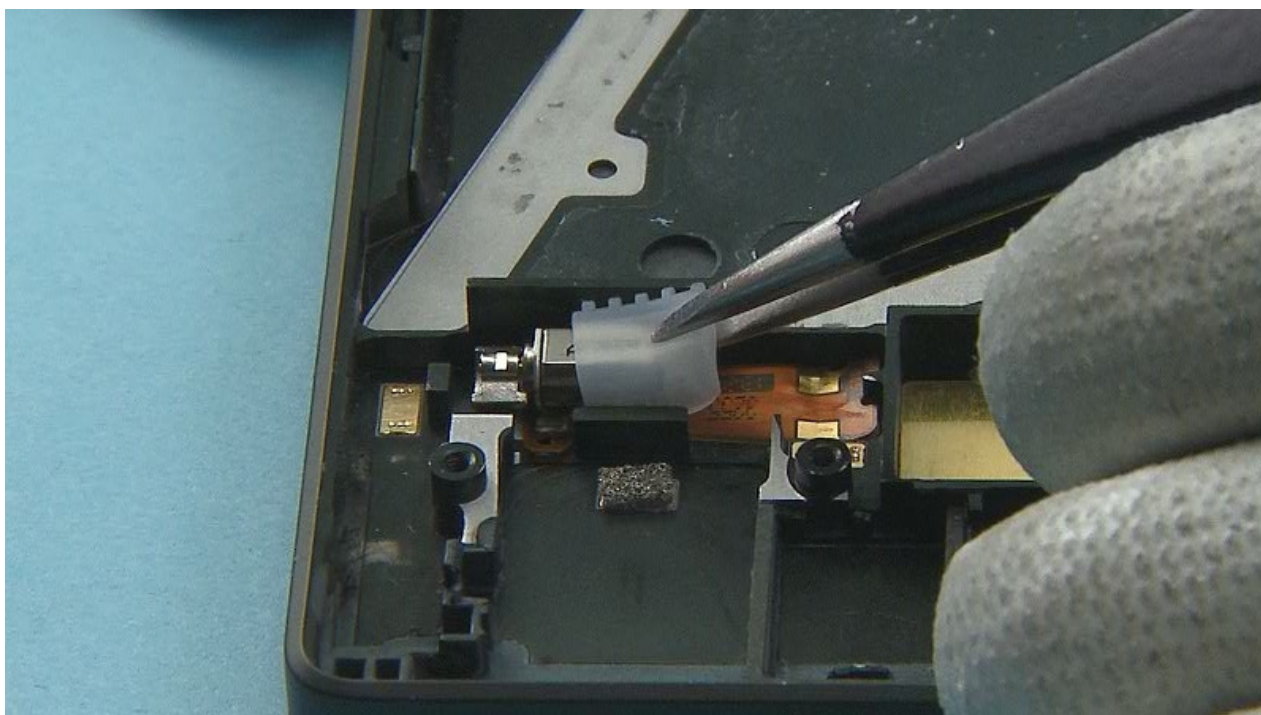
33) Use an AV jack to lift up the HSJ ASSEMBLY.



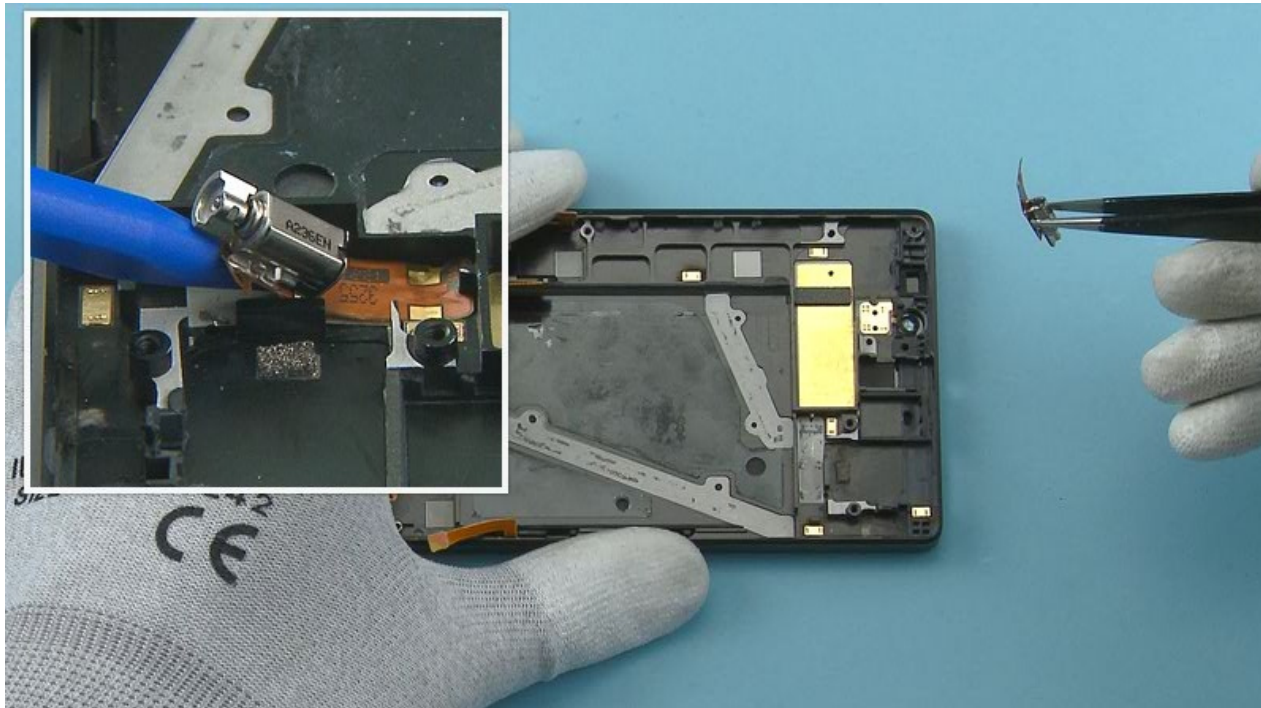
34) Release the HSJ ASSEMBLY flex with the SS-93 and remove the HSJ ASSEMBLY. Do not use it again. Discard it.



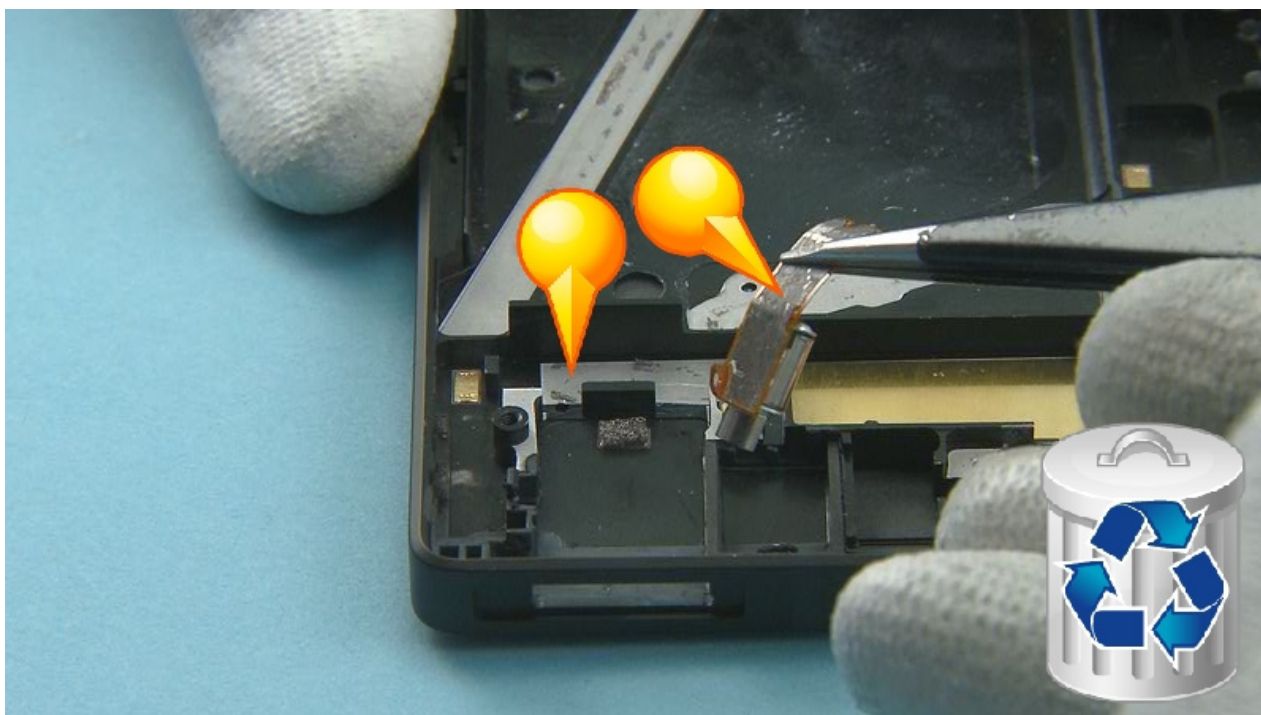
35) Remove the HSJ GASKET with tweezers.



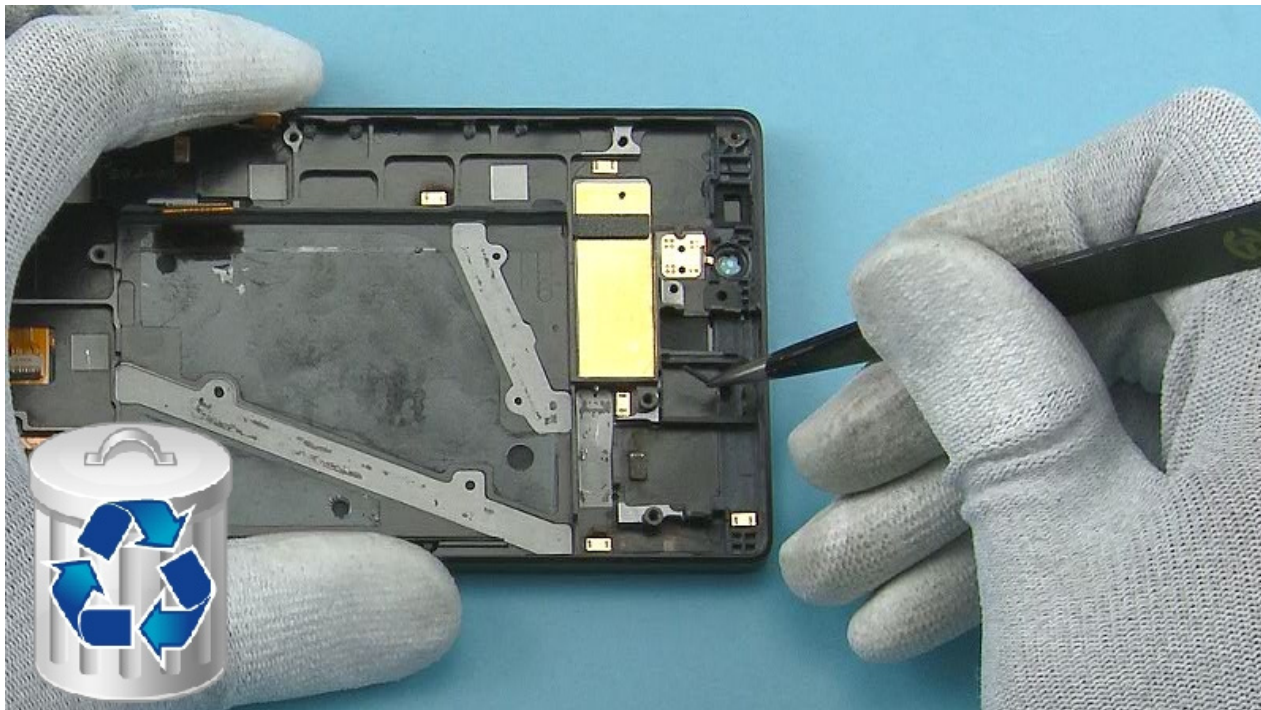
36) Remove the VIBRA BOOT with tweezers.



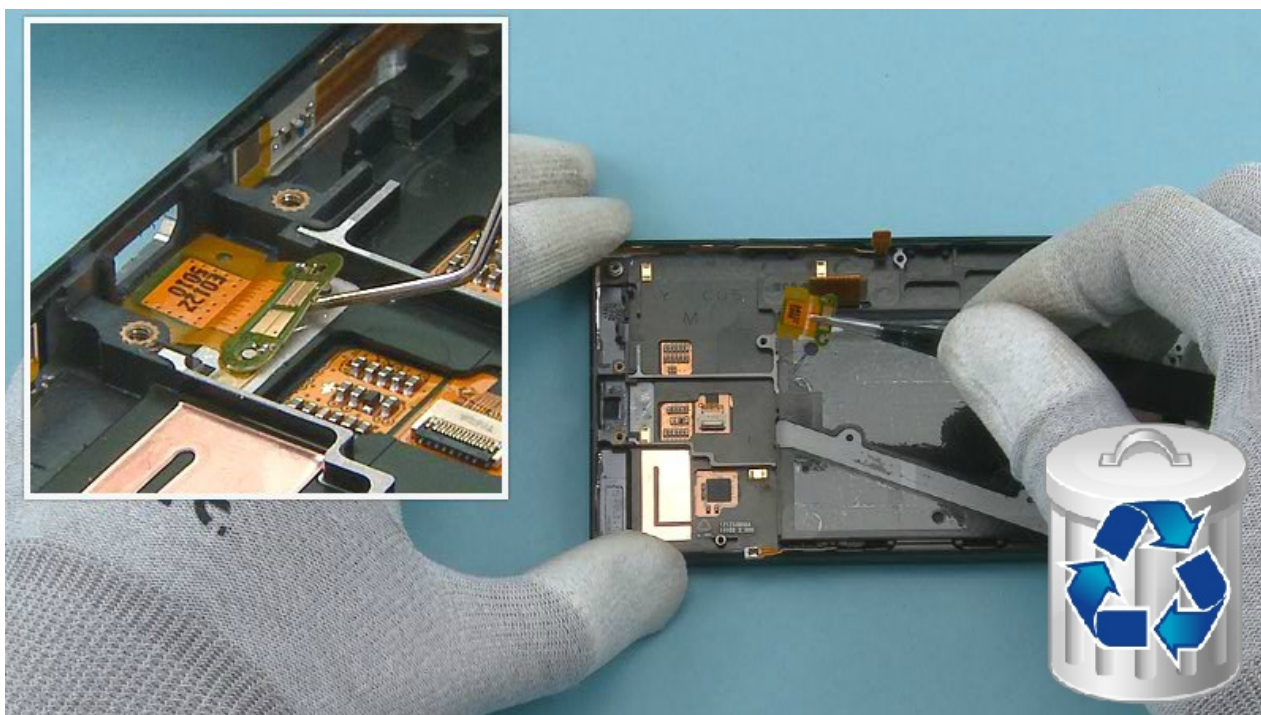
37) Release the VIBRA and the VIBRA flex with the SS-93. Remove the VIBRA ASSEMBLY.



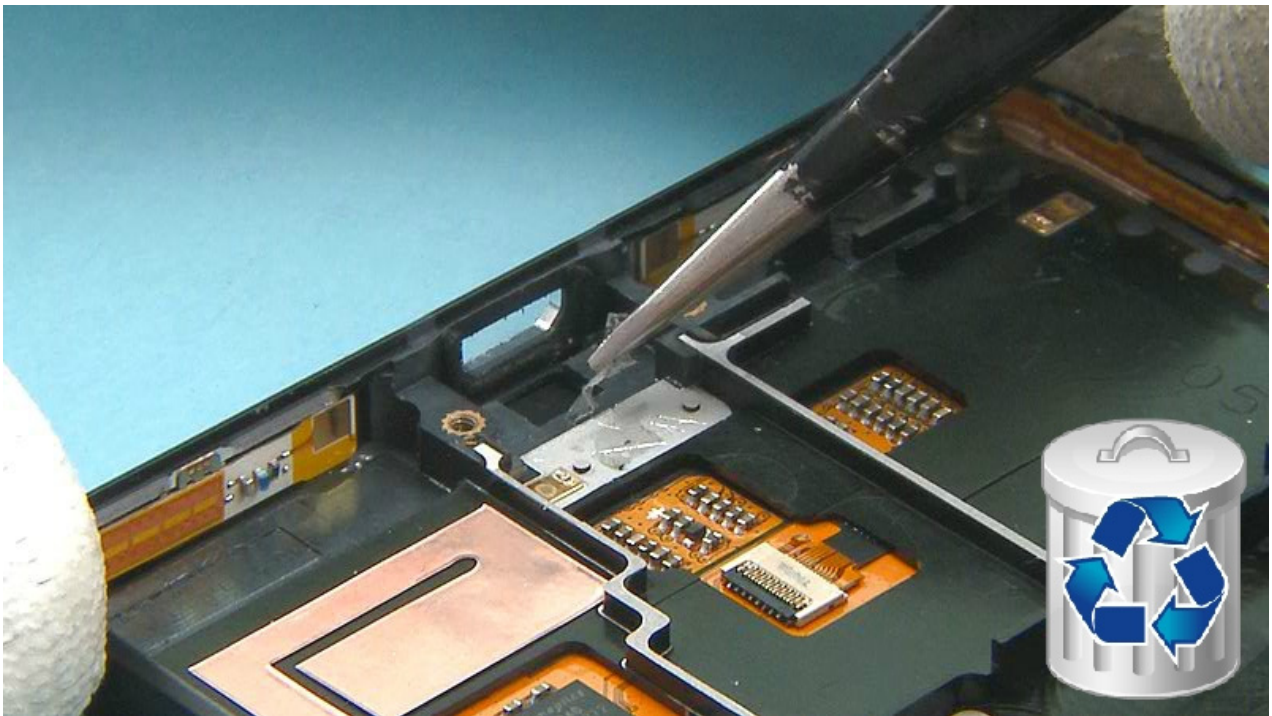
38) If the UI ASSEMBLY or the VIBRA ASSEMBLY are being reused, remove and discard any adhesive residue.



39) Remove and discard the DAUGHTER ENGINE BOARD GASKET only if it is damaged.



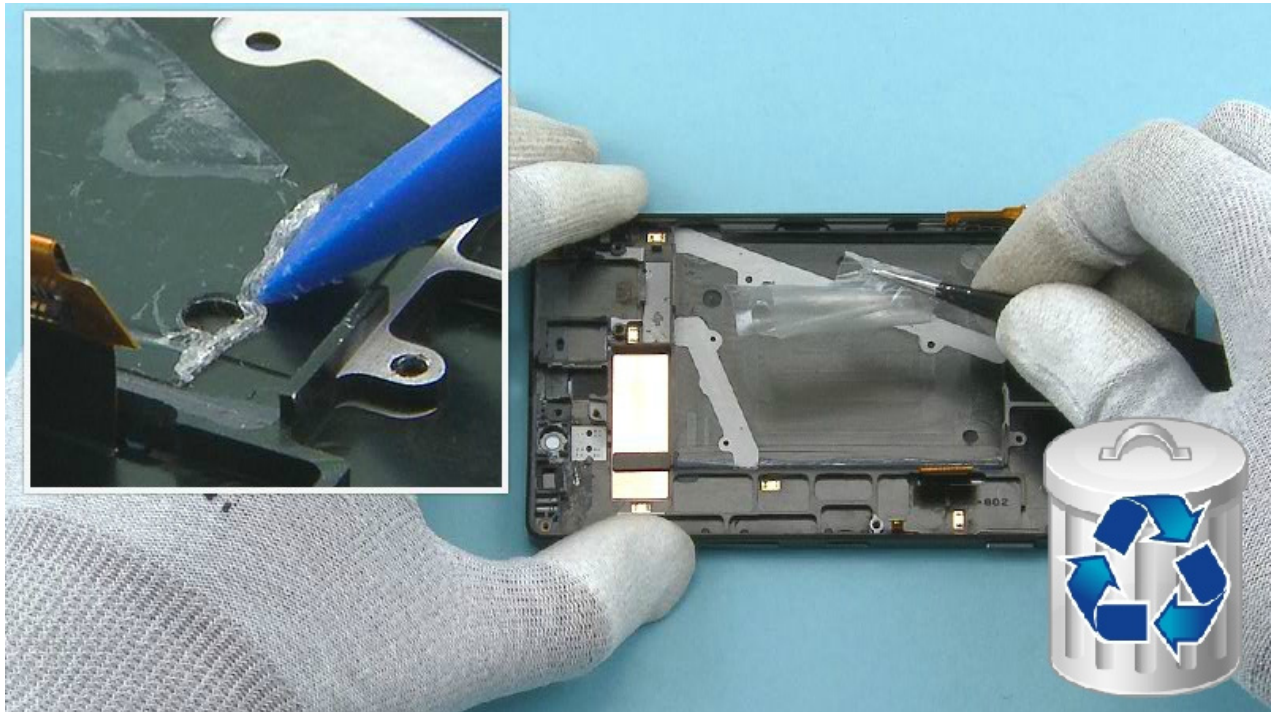
40) Release the PRIMARY MIC FLEX with the dental tool and remove it with tweezers. Do not use it again. Discard it.



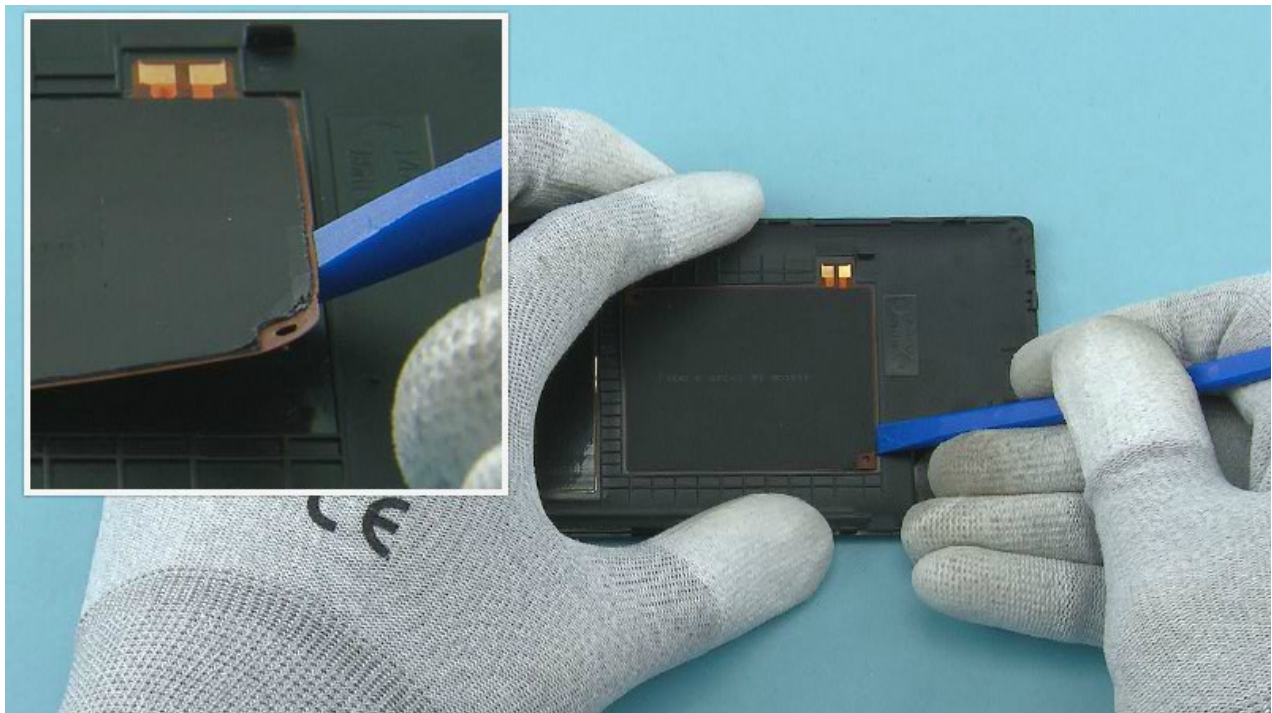
41) Remove and discard the PRIMARY MIC FLEX ADHESIVE from the UI ASSEMBLY with tweezers.



42) Peel off and discard the SMALL BATTERY ADHESIVE using SS-93 and tweezers.



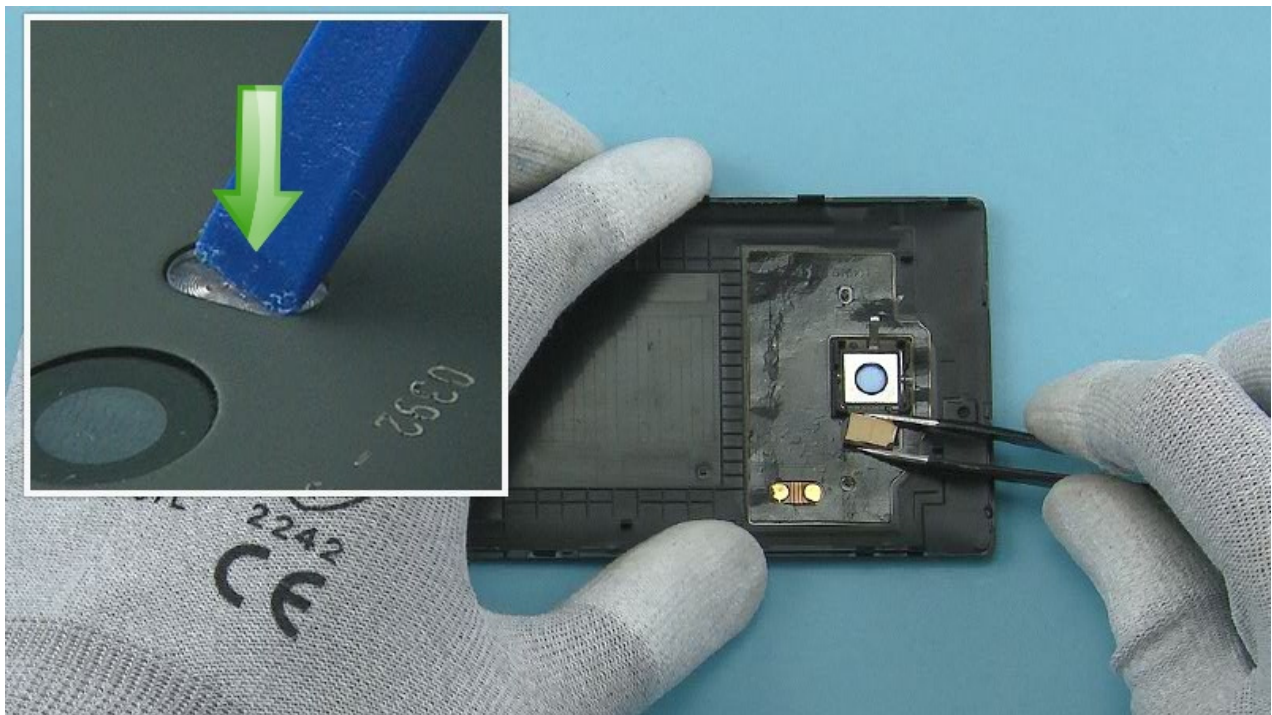
43) Peel off and discard the BATTERY ADHESIVE using SS-93 and tweezers



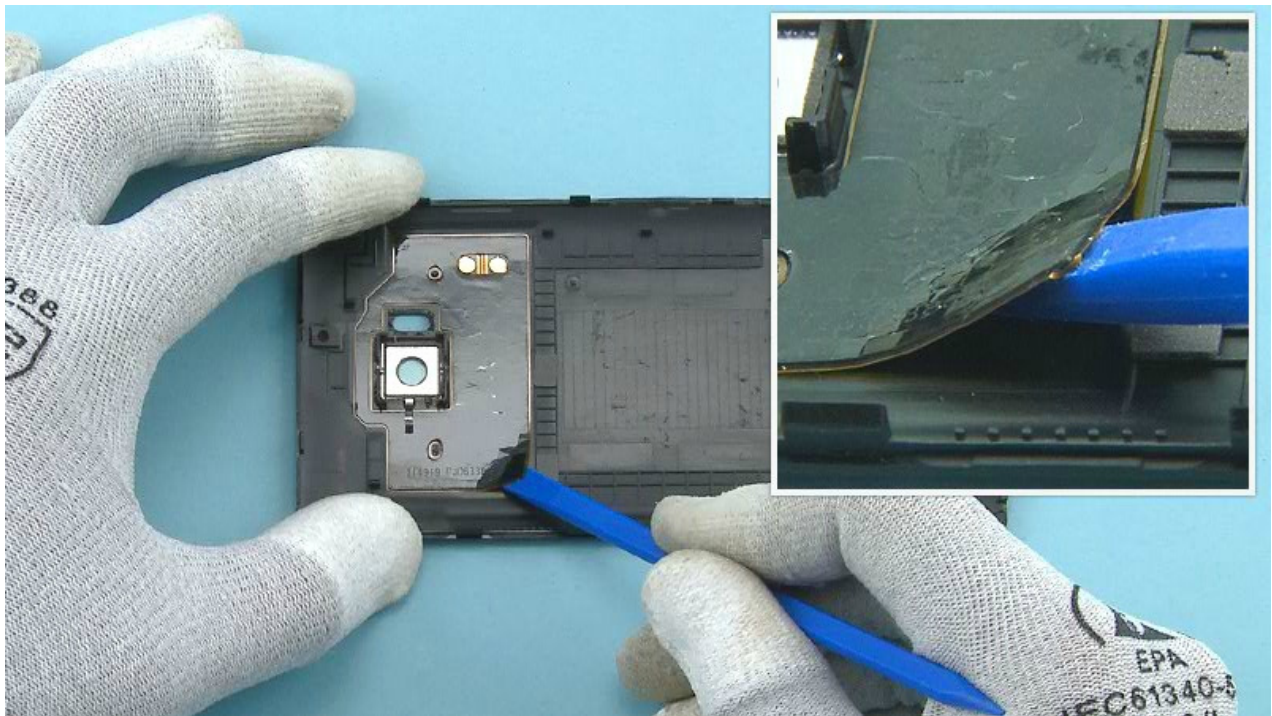
44) Release the WIRELESS CHARGING ASSEMBLY with the SS-93.



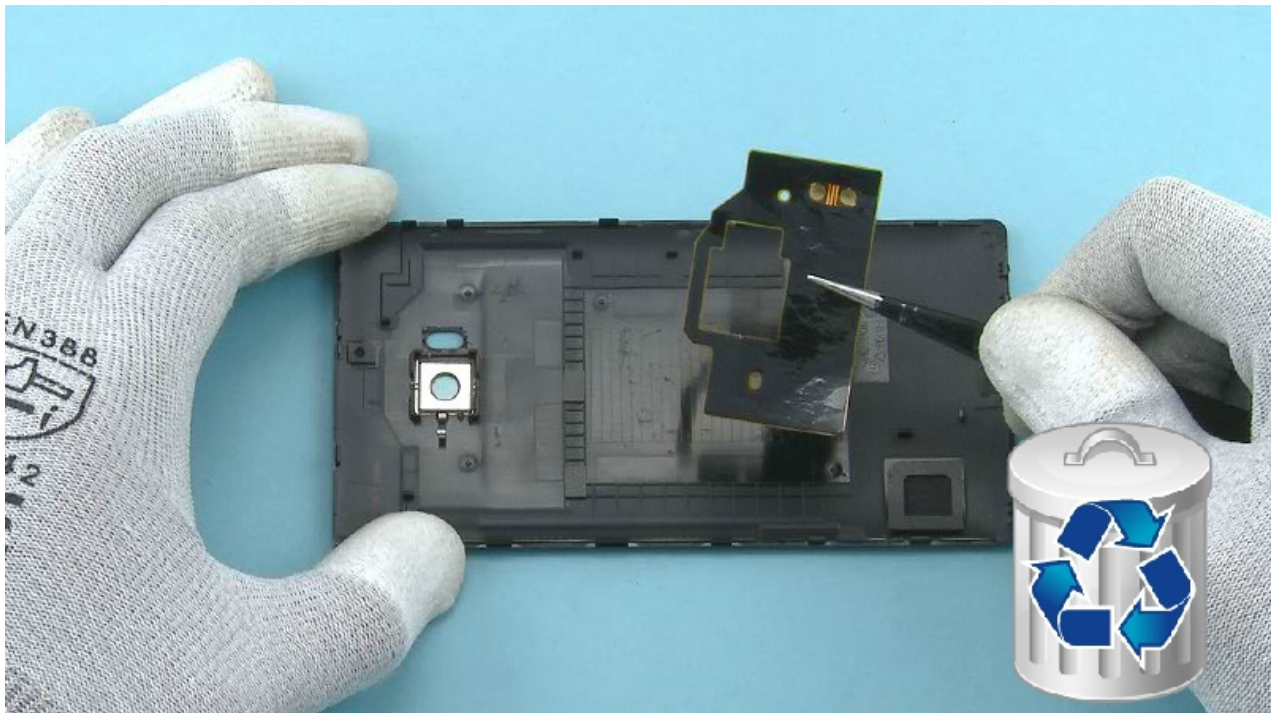
45) Remove the WIRELESS CHARGING ASSEMBLY. Do not use it again. Discard it.



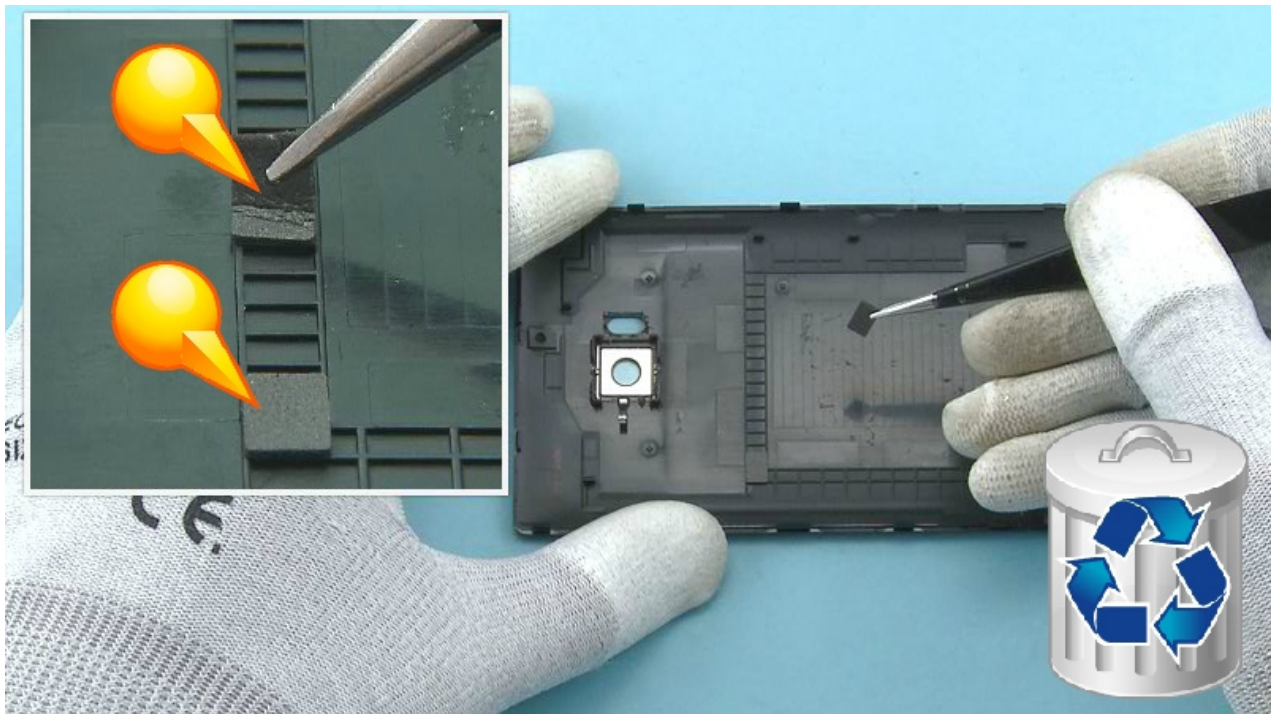
46) Push the LED FLASH from the back side with the SS-93 and remove it with tweezers. Remove any adhesive remains from the LED FLASH.



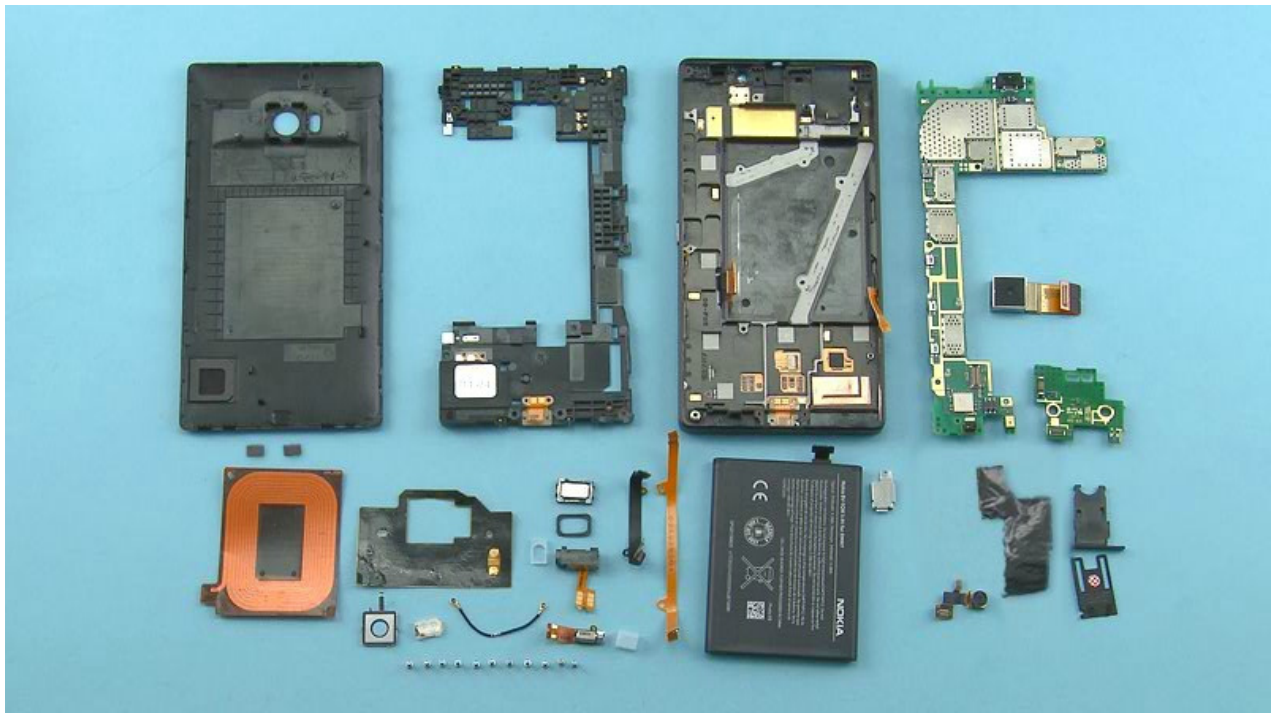
47) Release the NFC ANTENNA with the SS-93. Start from the corner.



48) Remove the NFC ANTENNA. Do not use it again. Discard it.



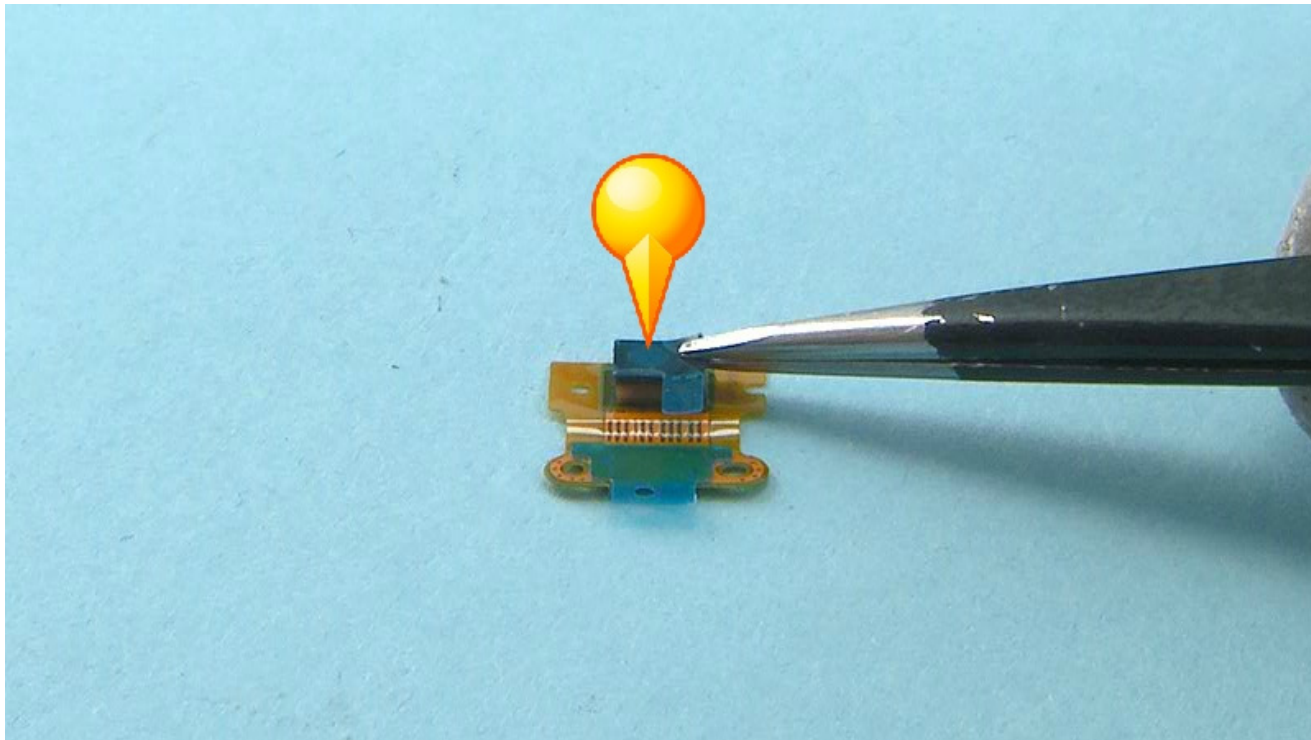
49) Remove and discard the two BACK COVER GASKETS with tweezers.



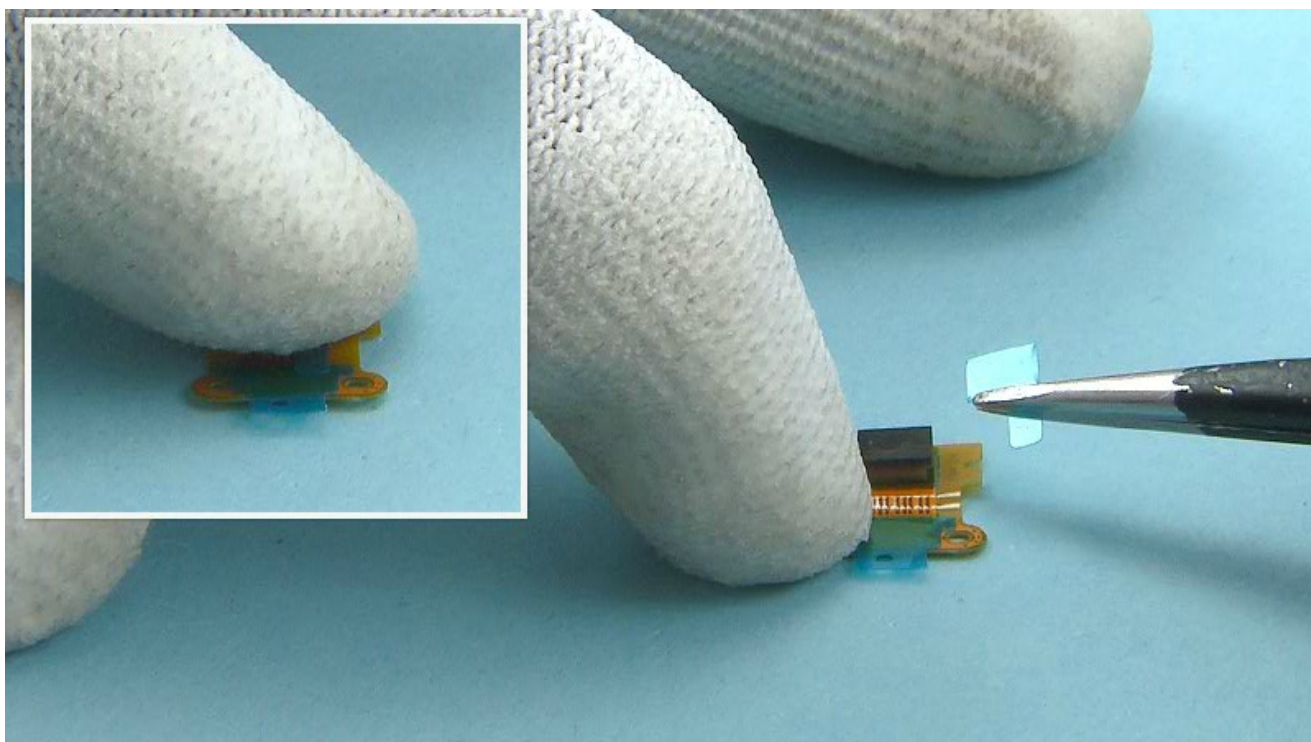
50) The Nokia Lumia 930 disassembly procedure is complete.

-END OF DISASSEMBLY-

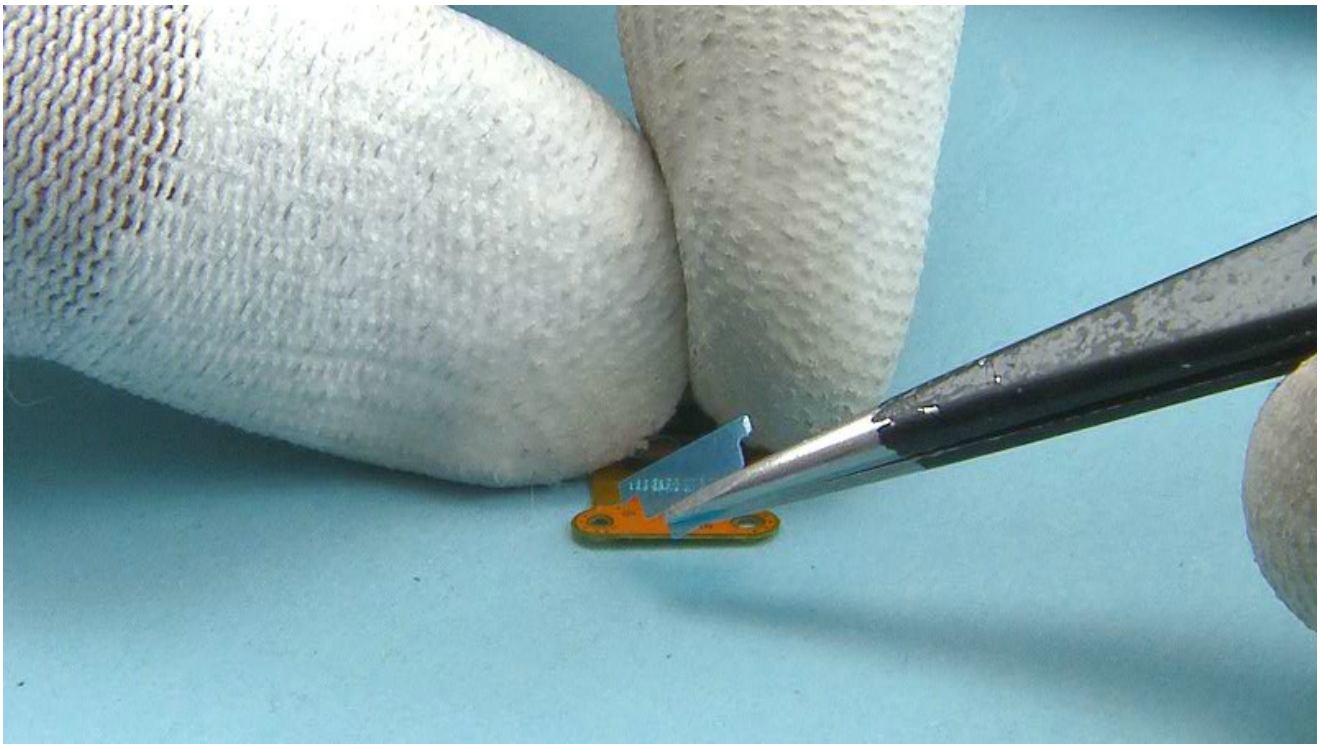
Note that the device shown in most of these pictures is the Nokia Lumia Icon. On those steps the spare parts and the assembly procedures are the same.



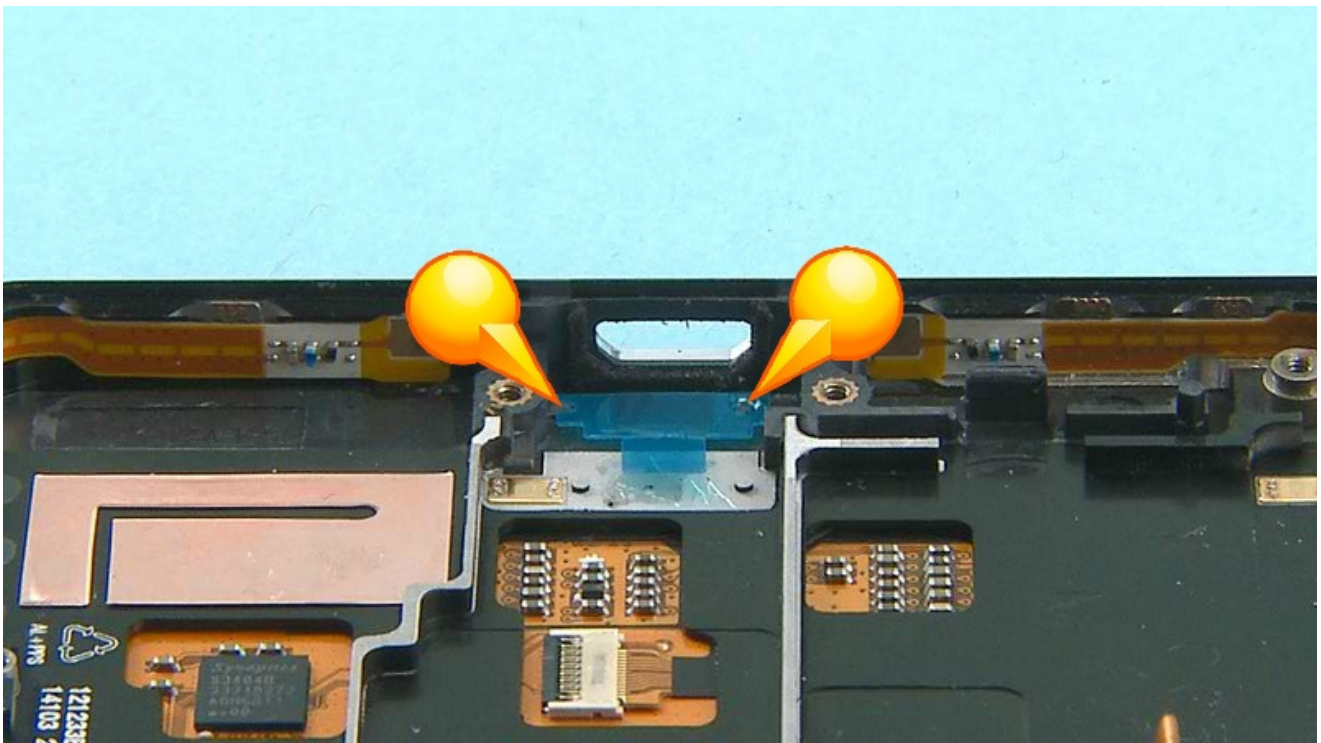
1) To assemble the PRIMARY MIC FLEX, first place the PRIMARY MIC GASKET on the microphone. Make sure the shown hole aligns with the microphone hole.



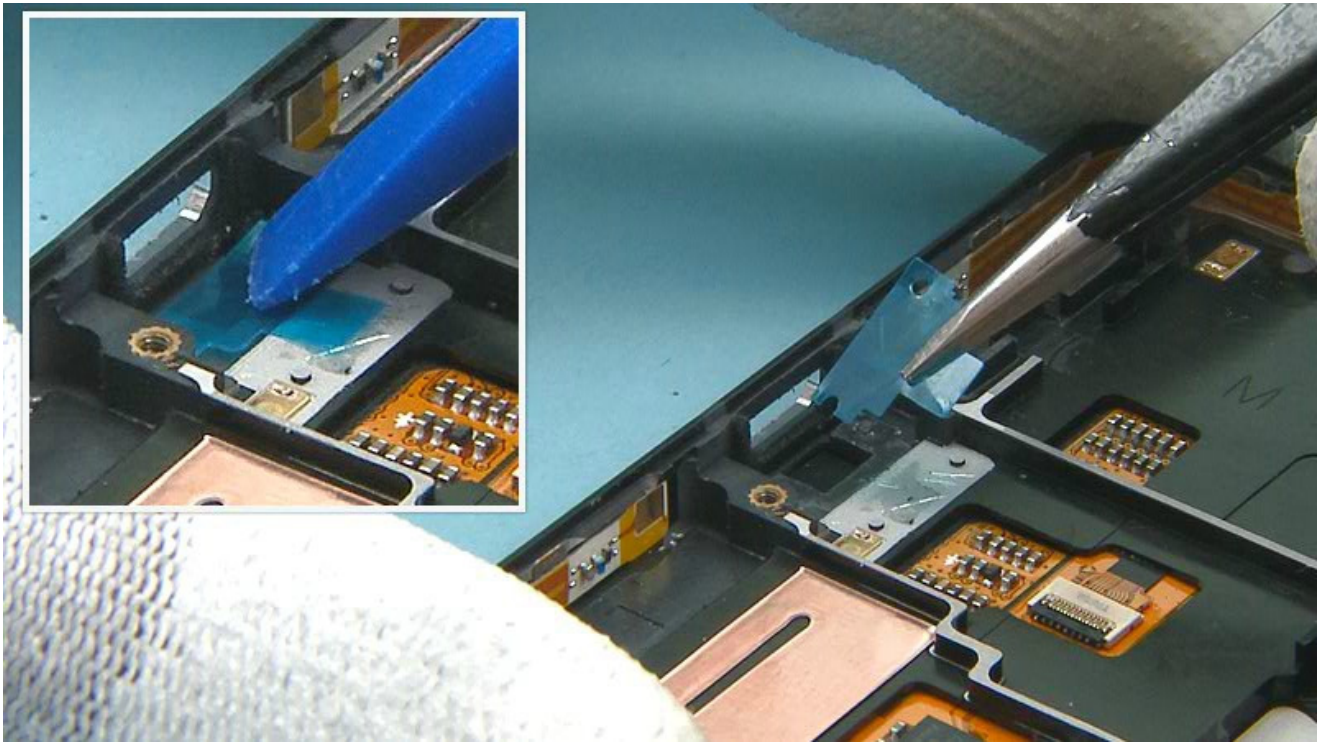
2) Press gently to activate the adhesive and remove the protective film from the PRIMARY MIC GASKET.



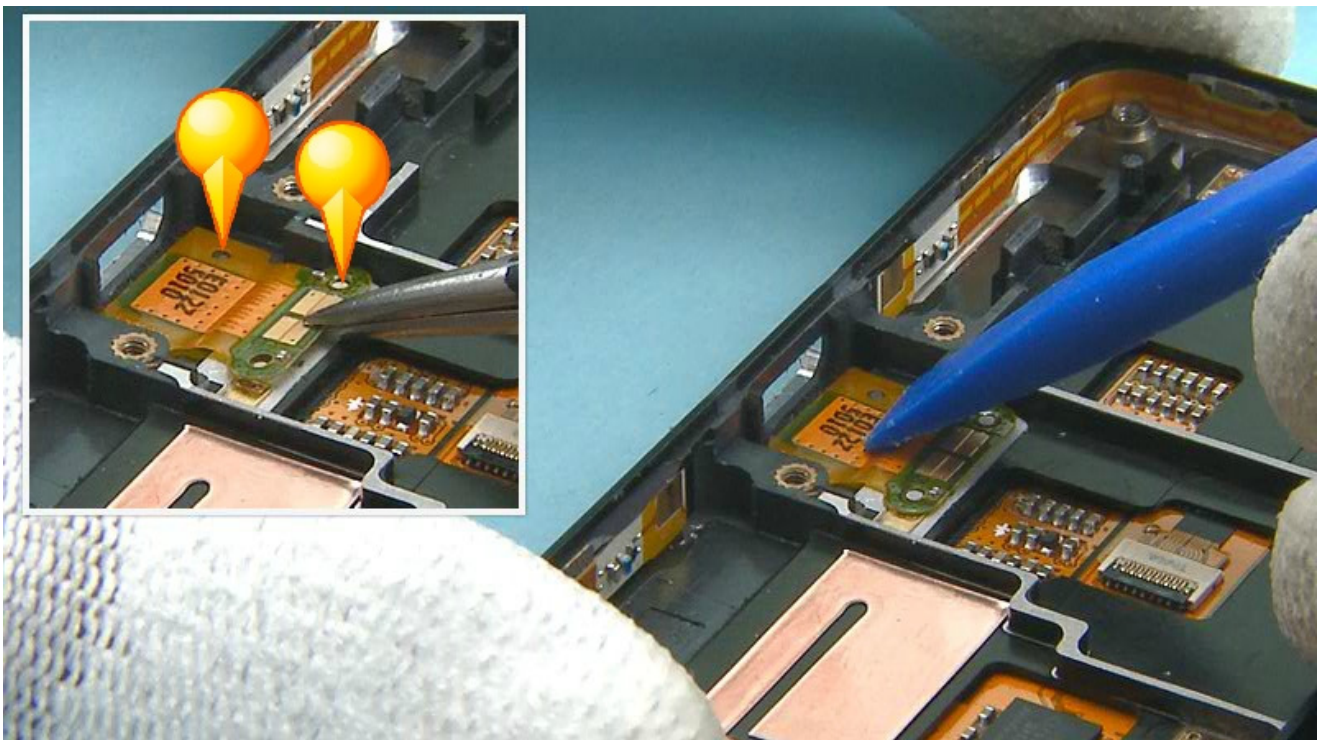
3) Remove also the protective film from the PRIMARY MIC FLEX.



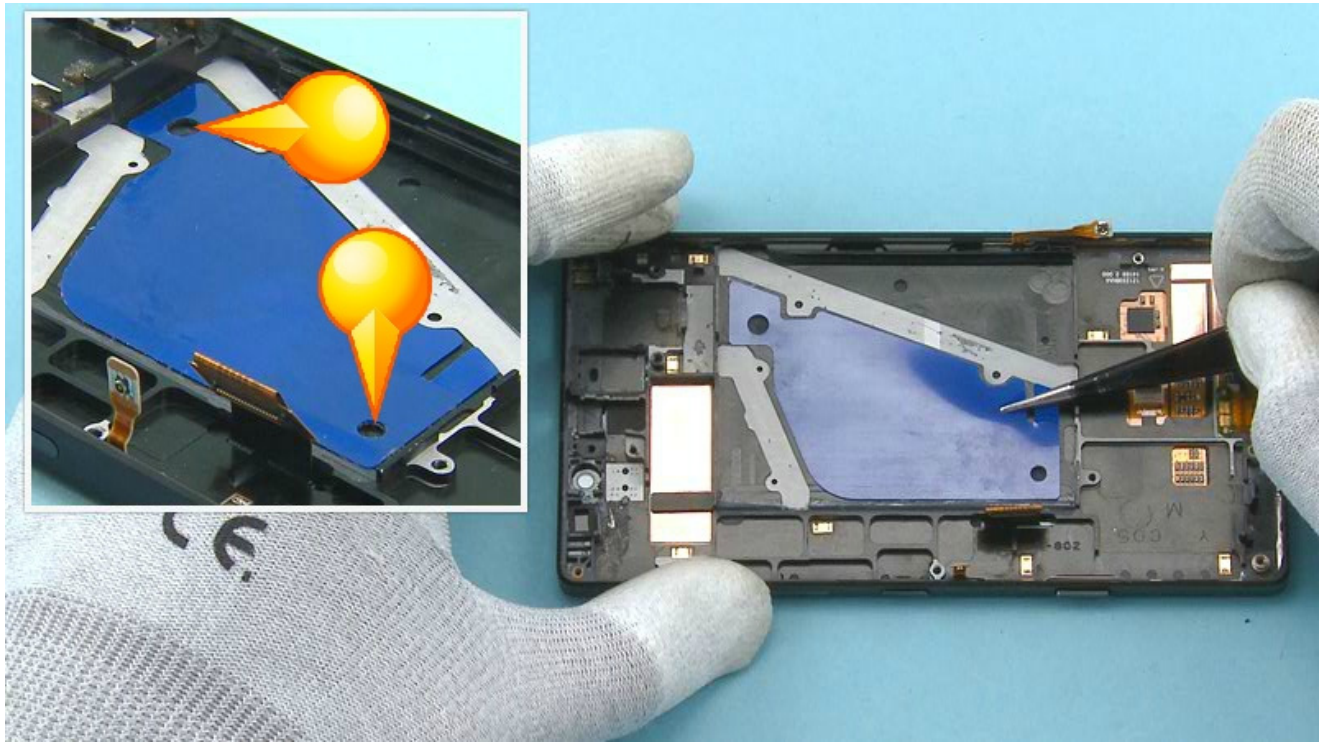
4) Place the PRIMARY MIC FLEX ADHESIVE to its slot in the UI ASSEMBLY. Use the shown holes to get the right alignment.



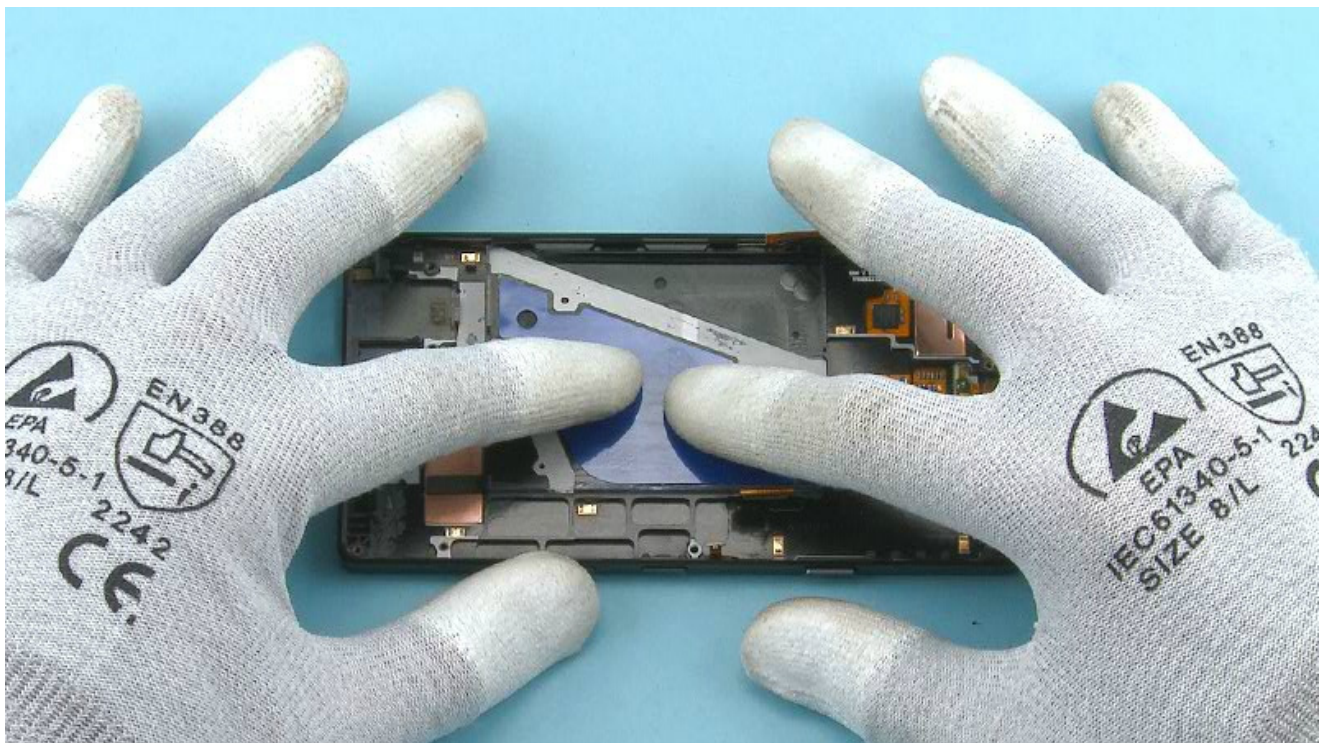
5) Press gently with the SS-93 to activate the adhesive and peel off the protective film.



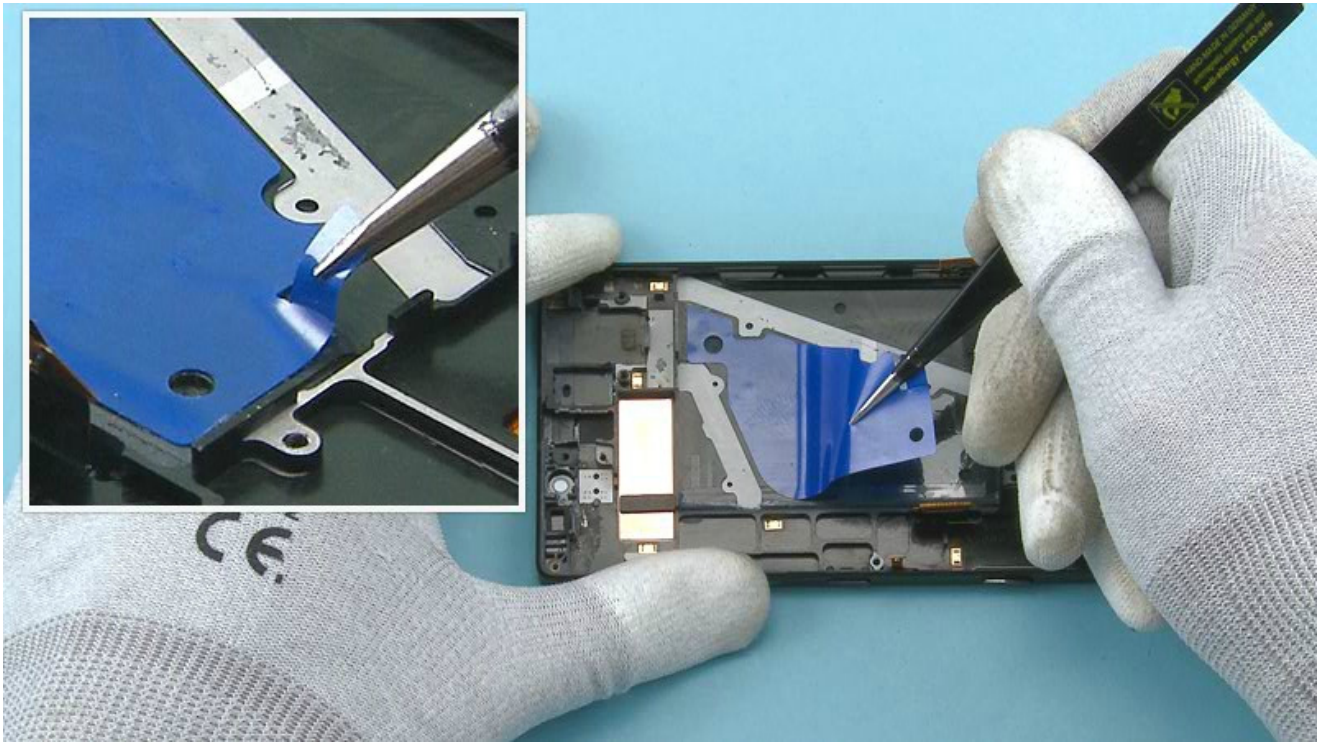
6) Place the PRIMARY MIC FLEX to its place. Use the holes to get the right alignment. Press gently to activate the adhesive.



7) Place the BATTERY ADHESIVE as shown on the UI ASSEMBLY. Use the shown holes to get the right alignment.



8) Press all around the ADHESIVE...



9) ... and peel off the protective film.



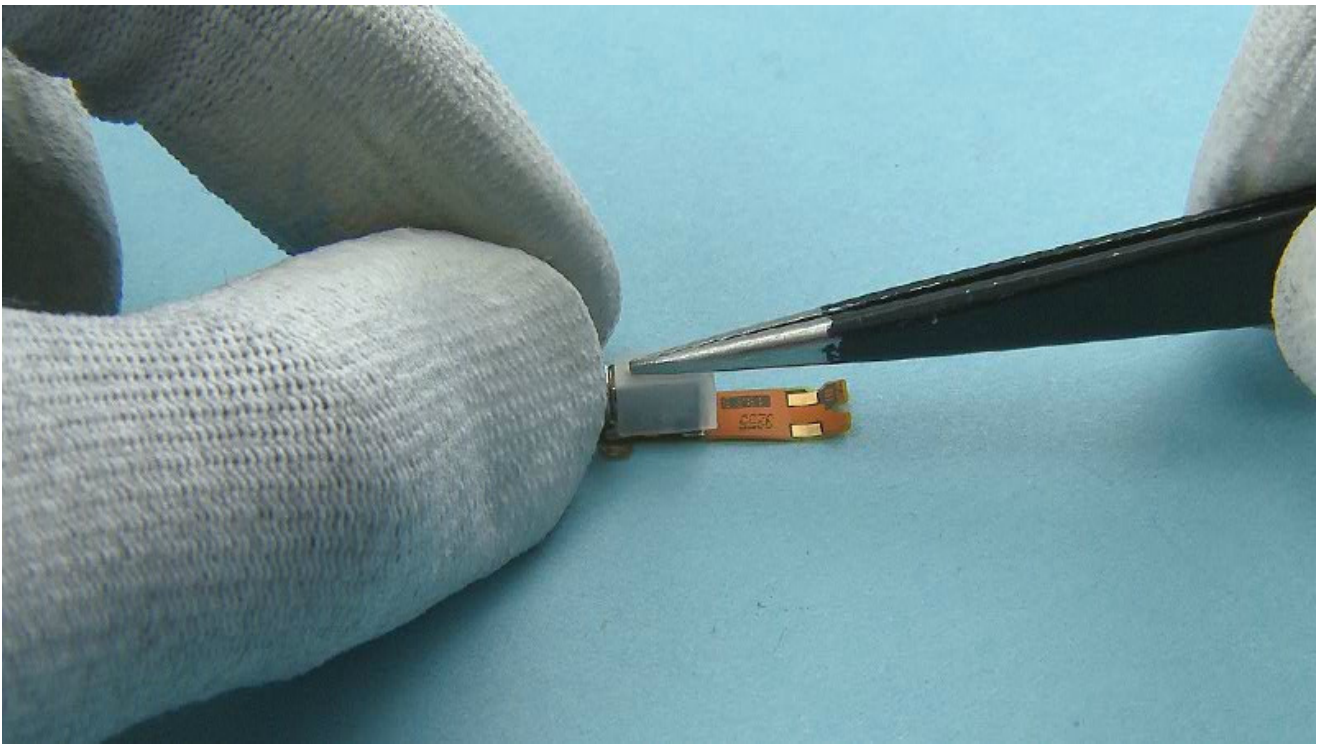
10) Place the SMALL BATTERY ADHESIVE as shown on the UI ASSEMBLY. Use the shown holes to get the right alignment.



11) Press all around the ADHESIVE...



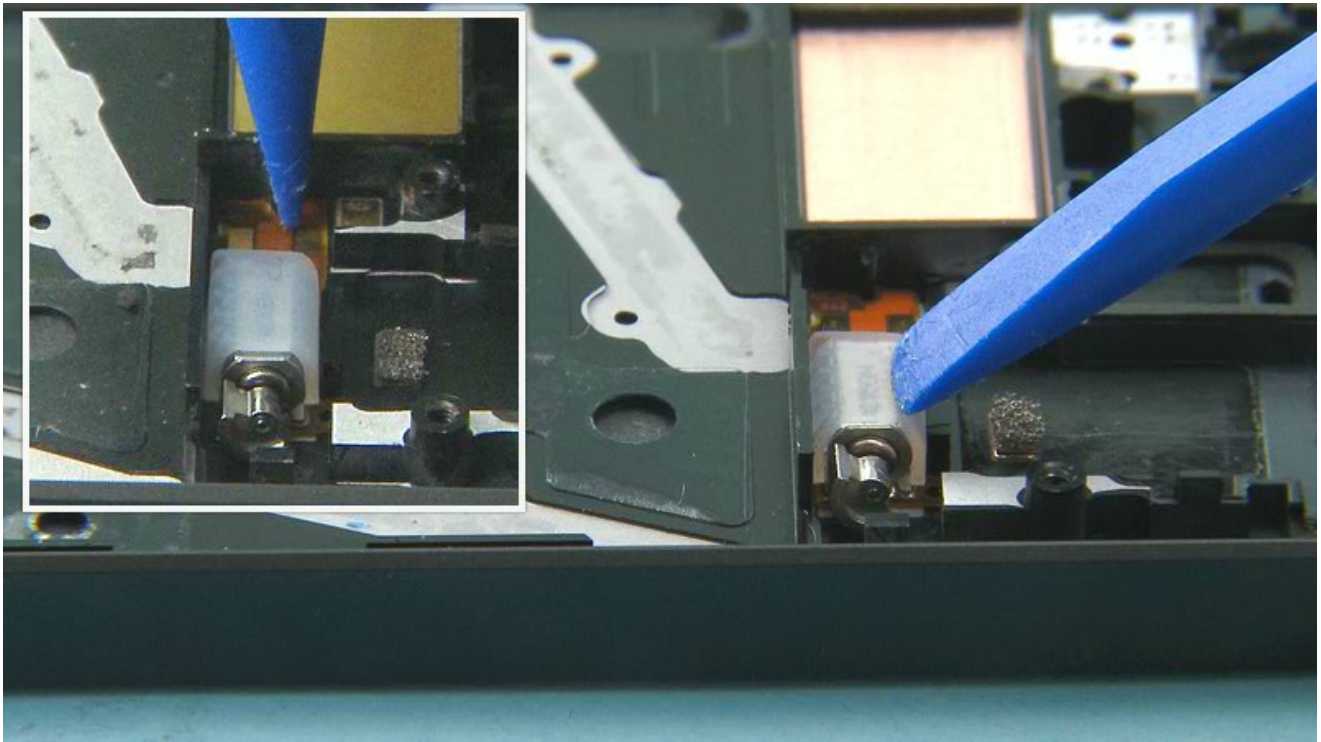
12) ... and peel off the protective film.



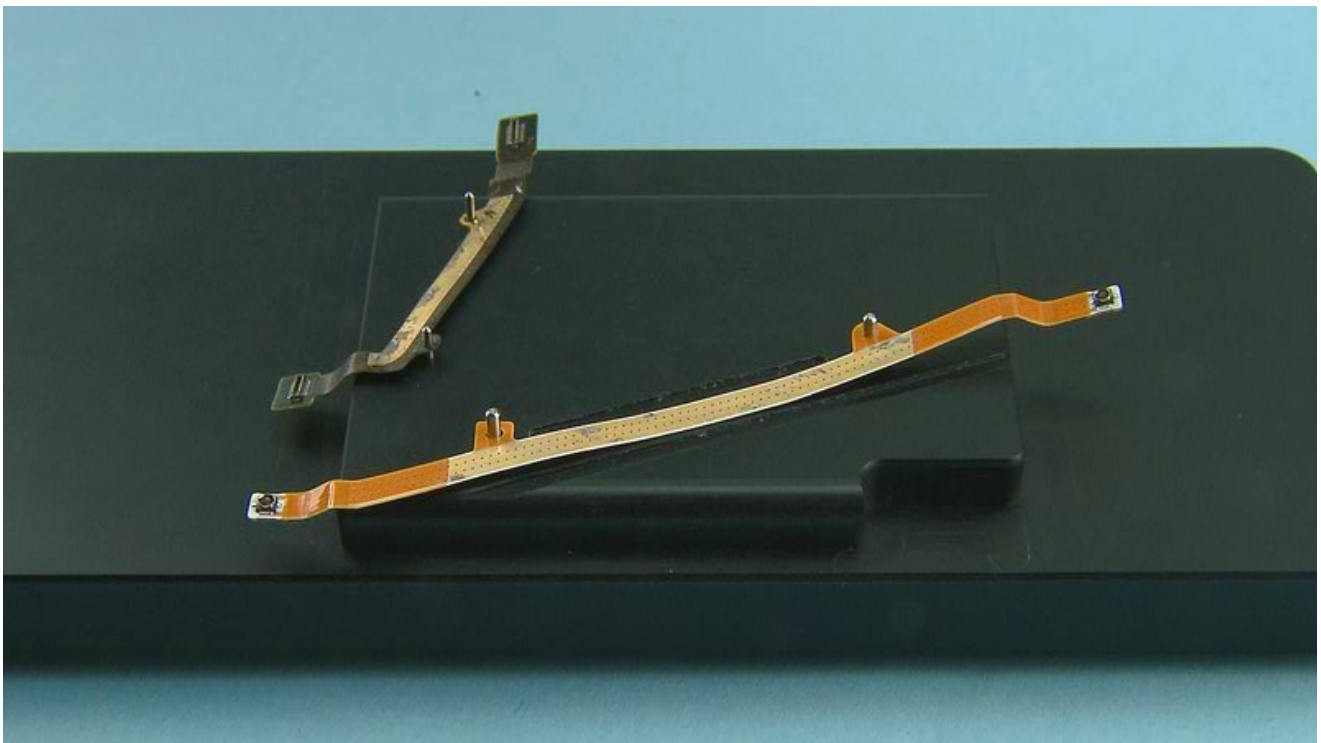
13) Start assembling the VIBRA ASSEMBLY by first placing the VIBRA BOOT on it as shown.



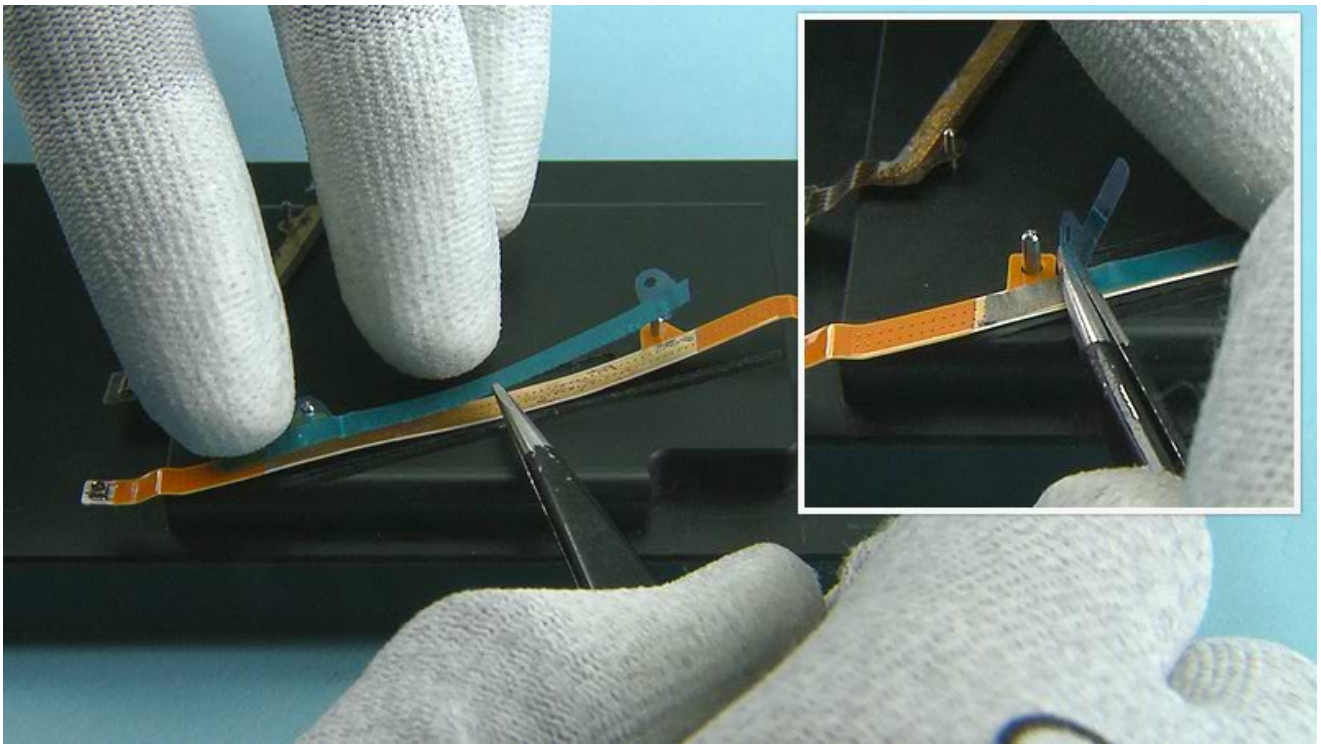
14) Place the VIBRA ASSEMBLY to its slot on the UI ASSEMBLY. First align the flex to its place, then lower down the VIBRA.



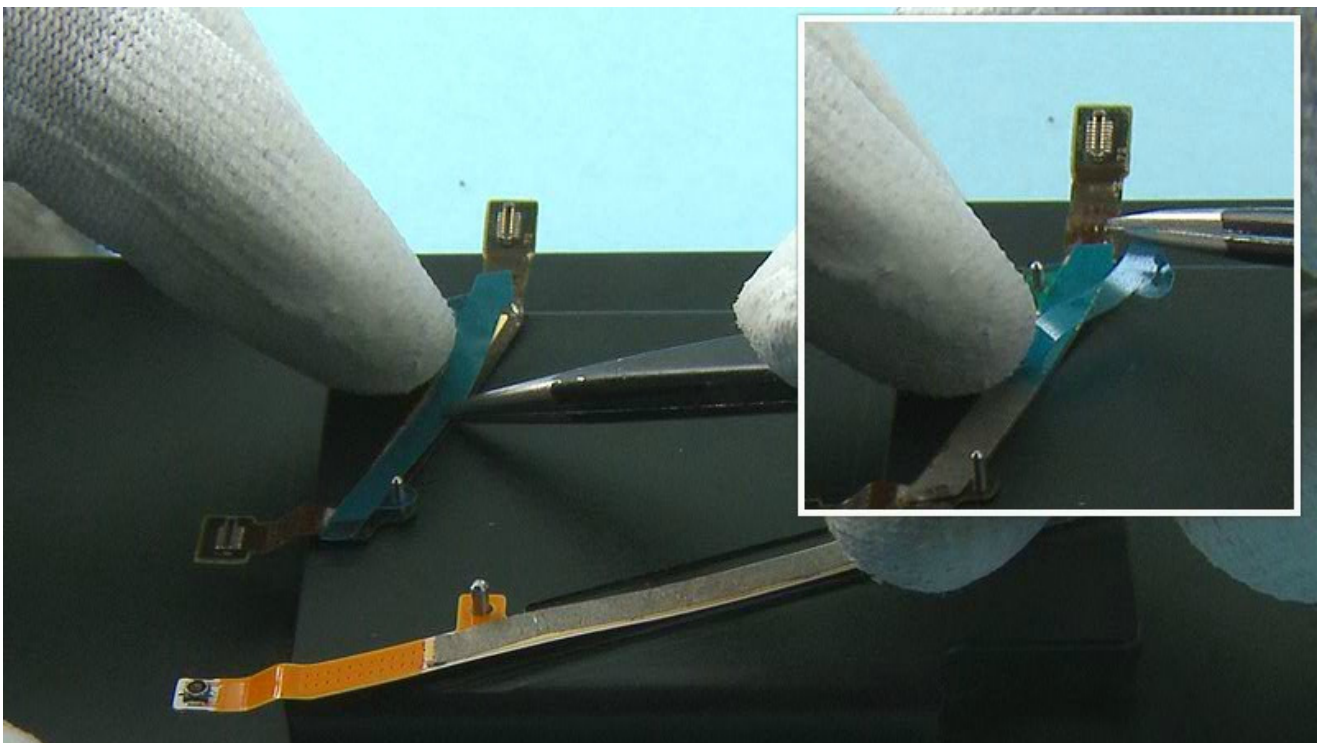
15) Gently press the flex and the VIBRA from the shown place to activate the adhesive.



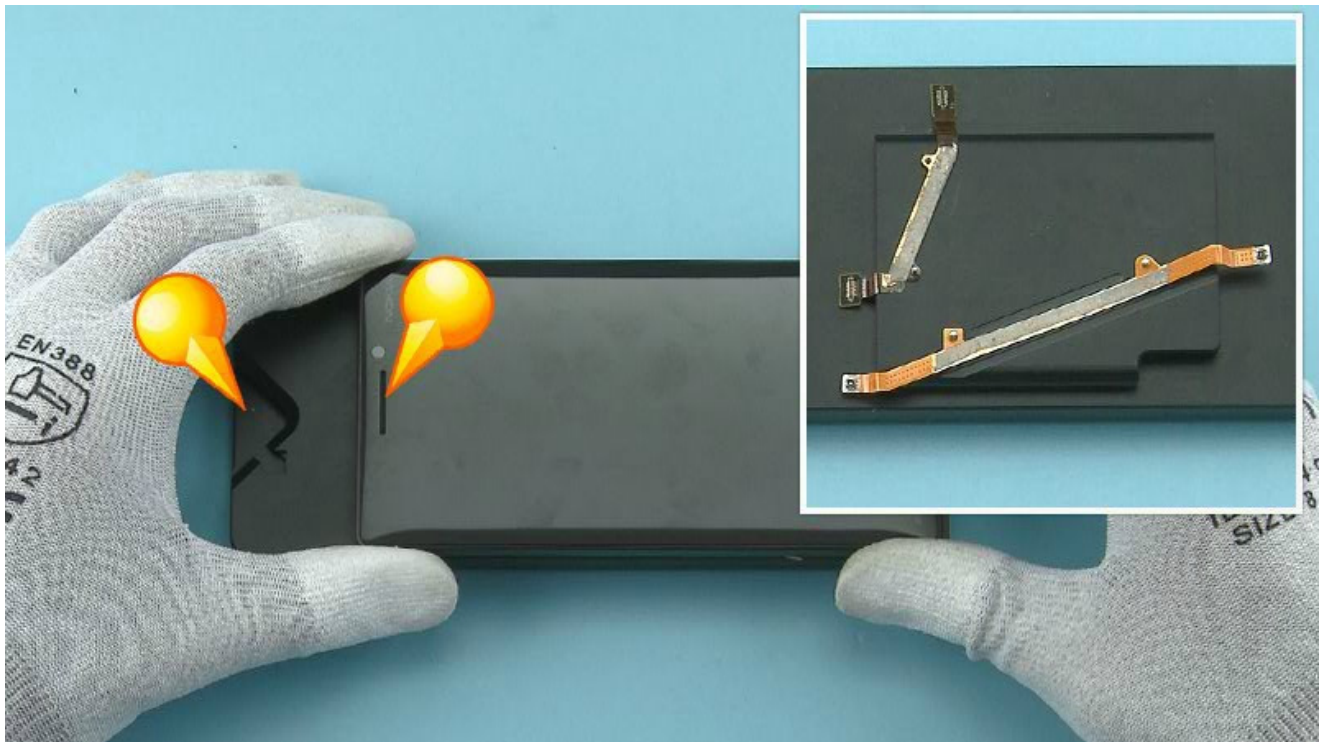
16) To assemble the MIMO COAX FLEX and the JUMPER FLEX, first place them on the SS-327 flex assembly jig. Use the guiding pins to get the right placement.



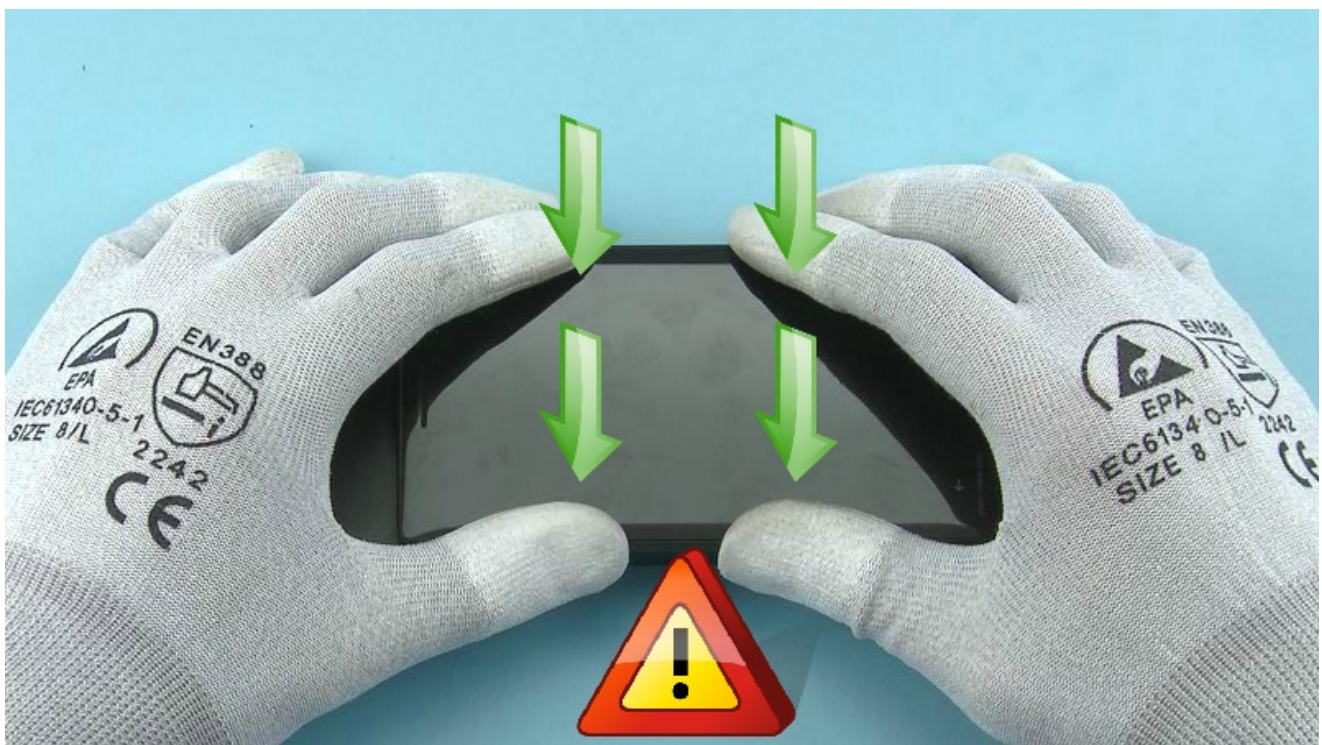
17) Place the MIMO COAX FLEX ADHESIVE on the MIMO COAX FLEX. Press firmly to activate the adhesive and remove the protective film.



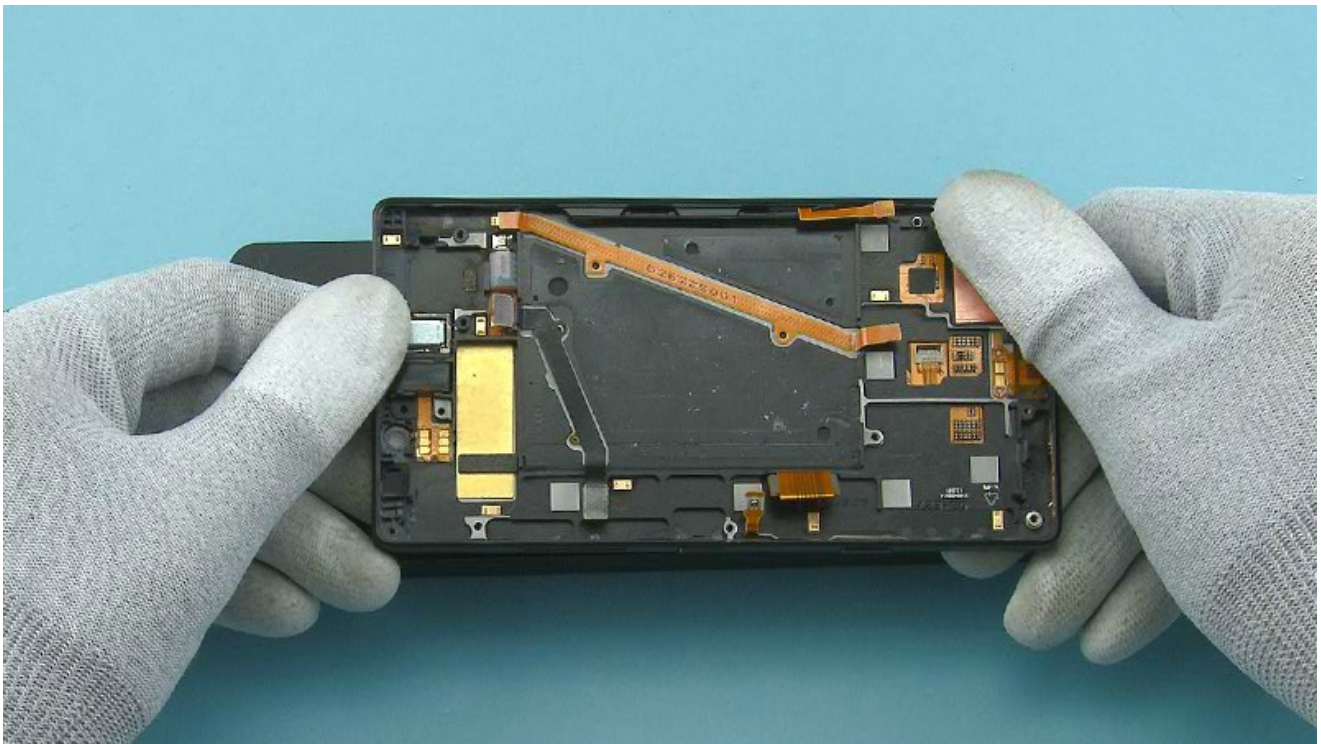
18) Place the JUMPER FLEX ADHESIVE on the JUMPER FLEX. Press firmly and remove the protective film.



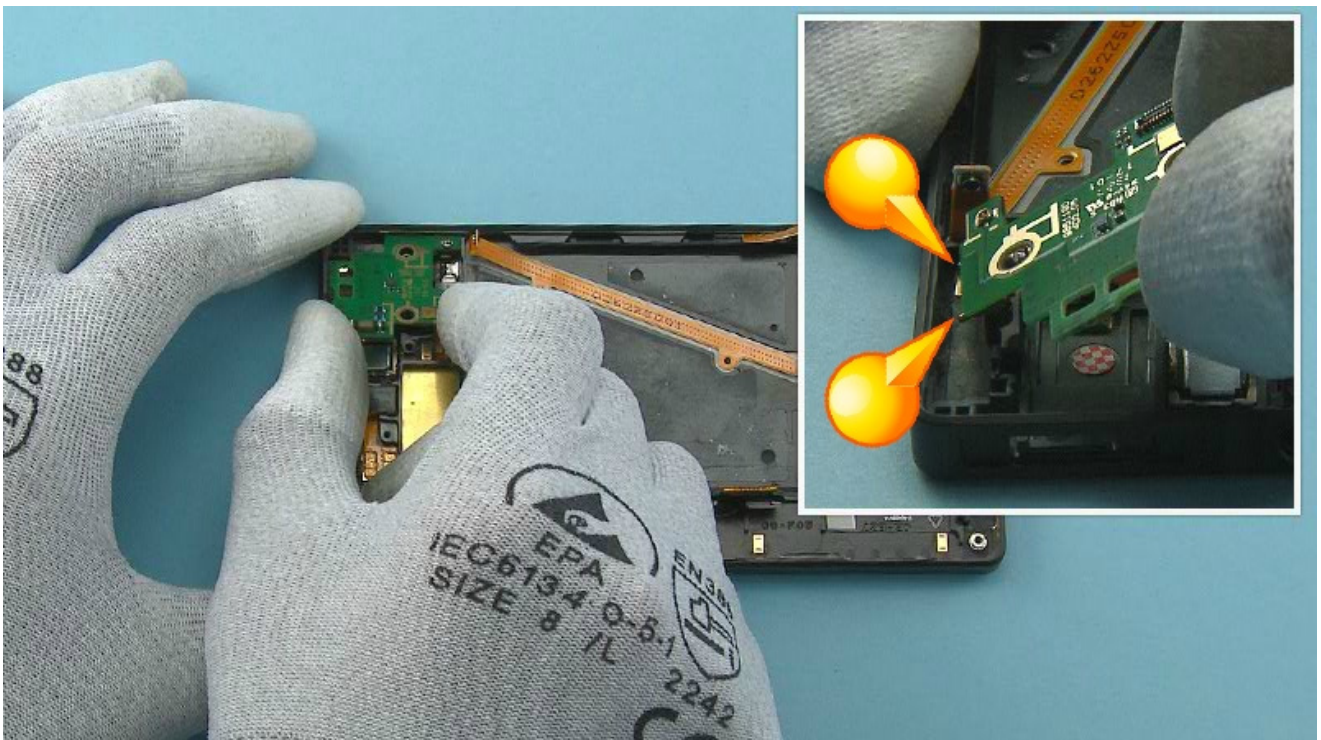
19) Before placing the UI ASSEMBLY on the jig check once more that the flexes are positioned on the jig as shown. Check also that the top side of the UI ASSEMBLY is facing the shown side of the jig as shown.



20) Then place the UI ASSEMBLY on the jig and press it gently but properly to get the flexes attached. Be careful not to damage the DISPLAY.



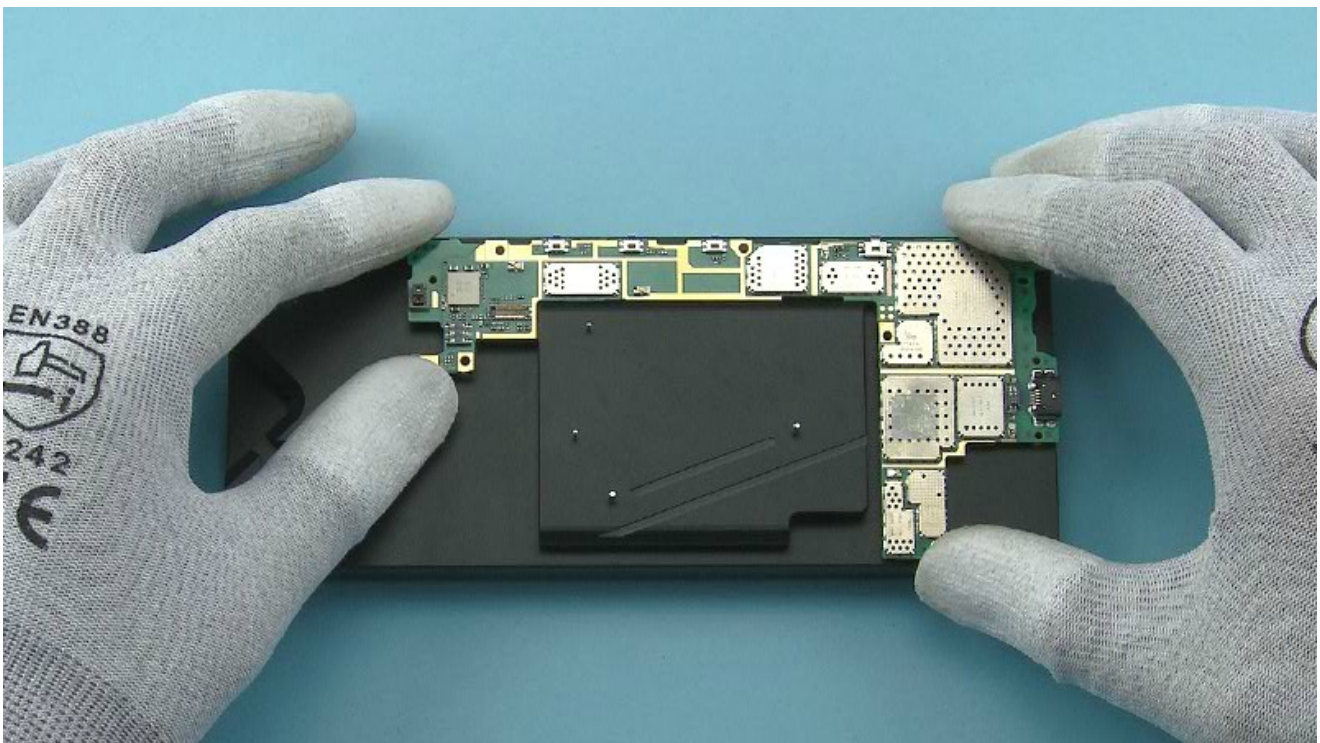
21) Remove the UI ASSEMBLY from the jig and check that the flexes are properly attached.



22) Assemble the DAUGHTER ENGINE BOARD to the UI ASSEMBLY shown side first. Align the two shown pogo pins to their places.



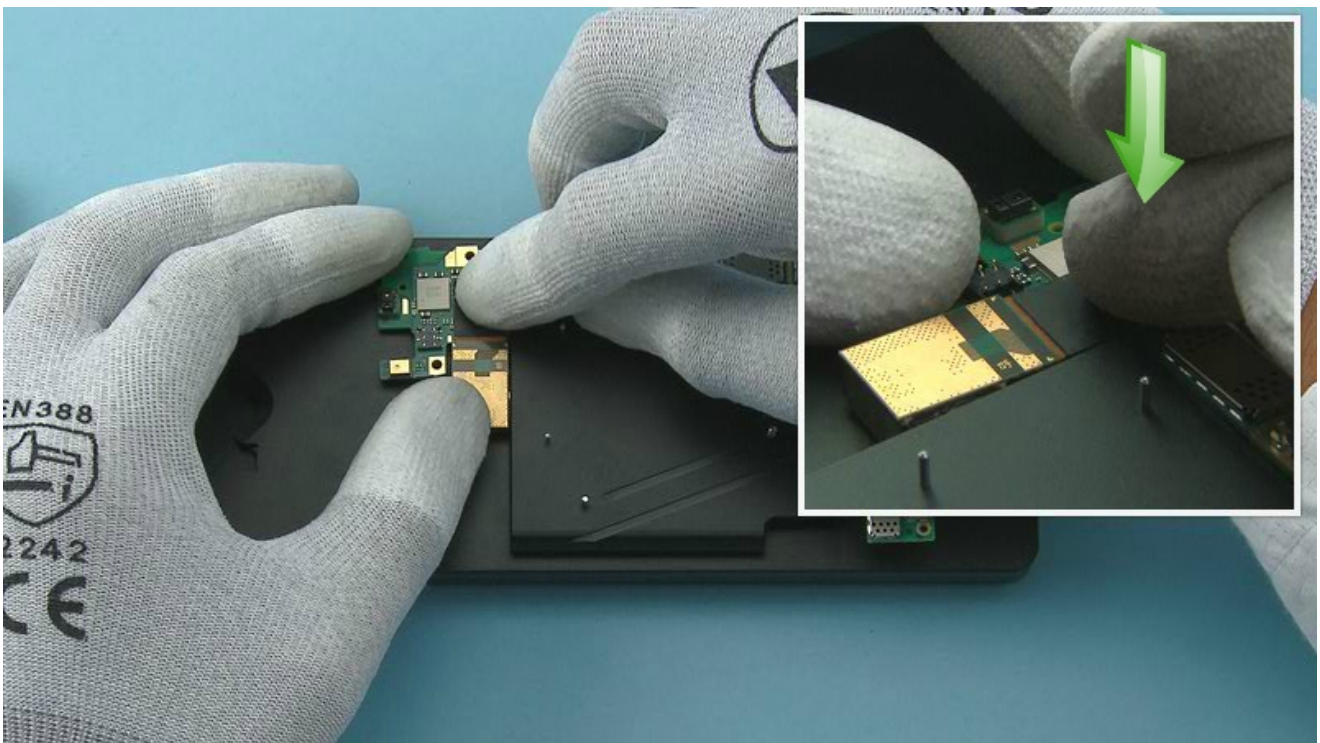
23) Then lower down the DAUGHTER ENGINE BOARD and press down to attach the shown clip. Be careful not to damage the DAUGHTER ENGINE BOARD or any of its componets.



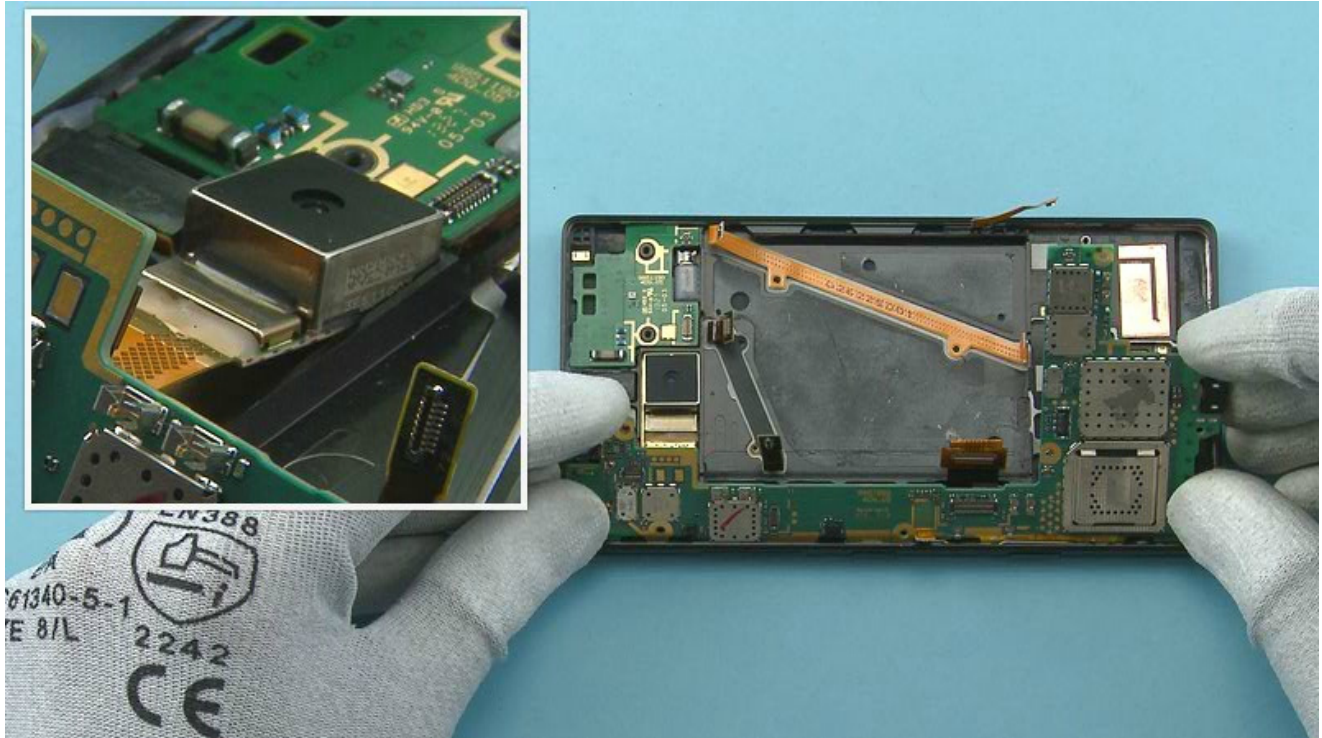
24) When assembling the CAMERA use the SS-327 flex assembly jig as a steady platform.



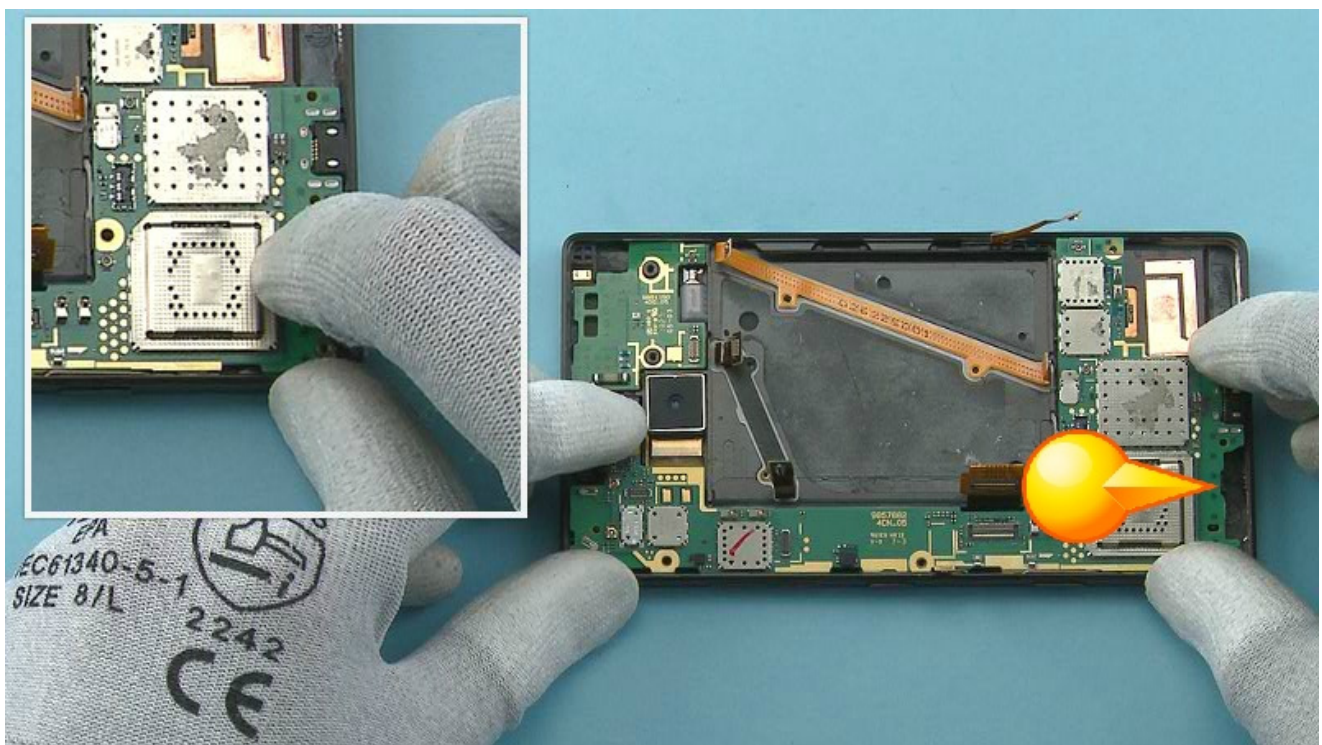
25) Connect the CAMERA to the ENGINE BOARD with the SS-93. Be careful not to damage the connector or any components nearby.



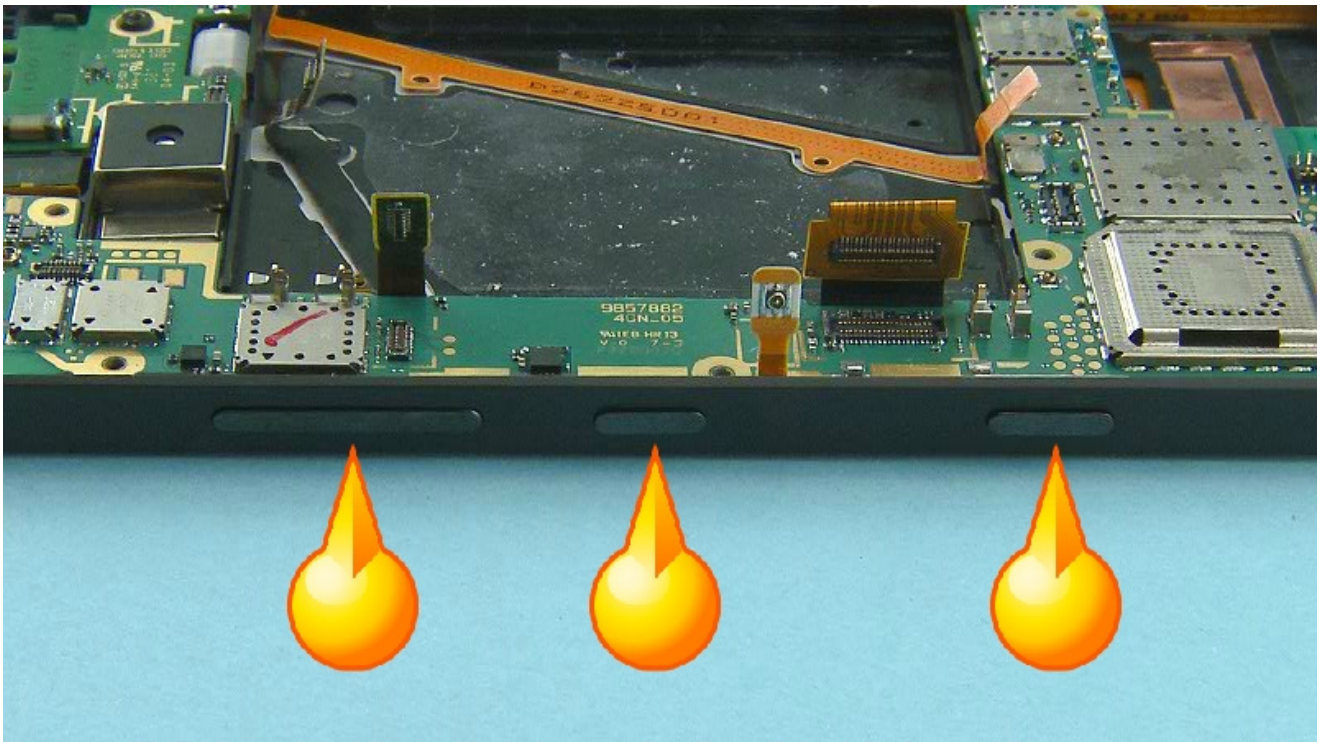
26) Then fold the CAMERA flex as shown.



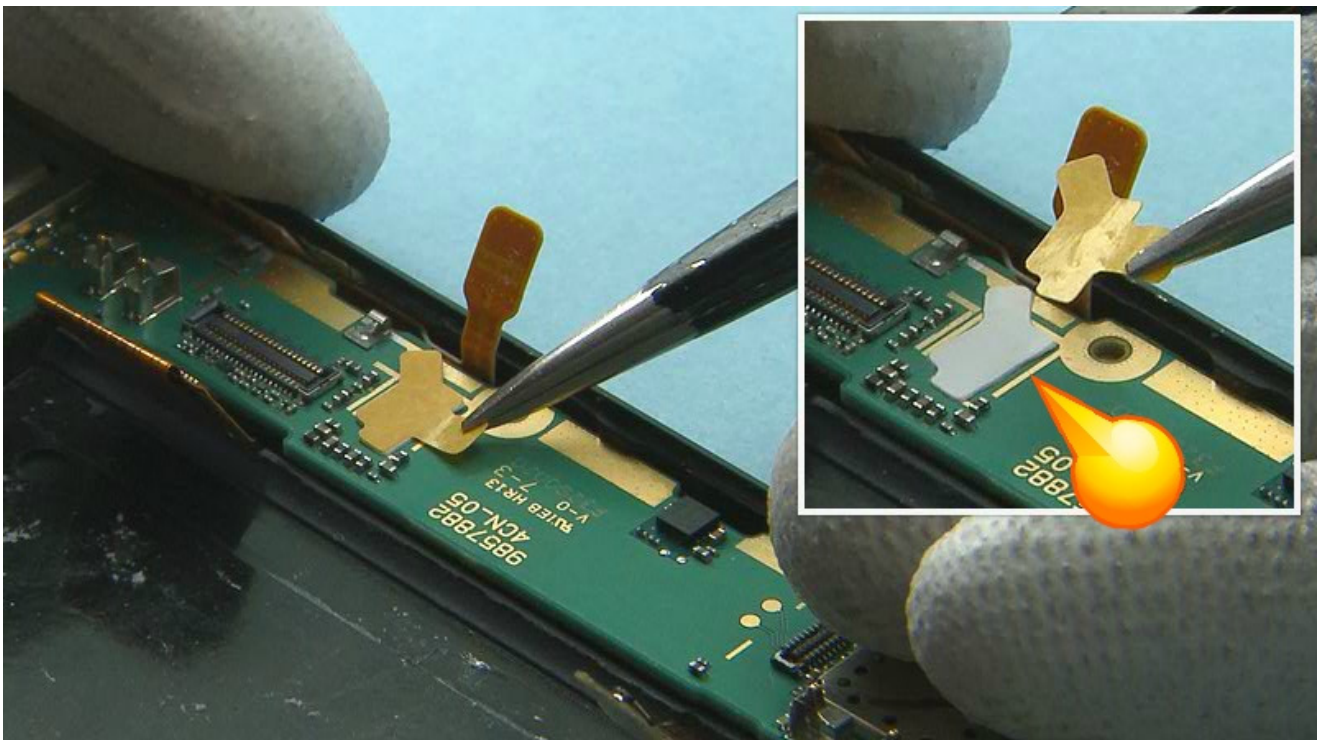
27) Start assembling the ENGINE BOARD to the UI ASSEMBLY shown side first and align the CAMERA to its socket.



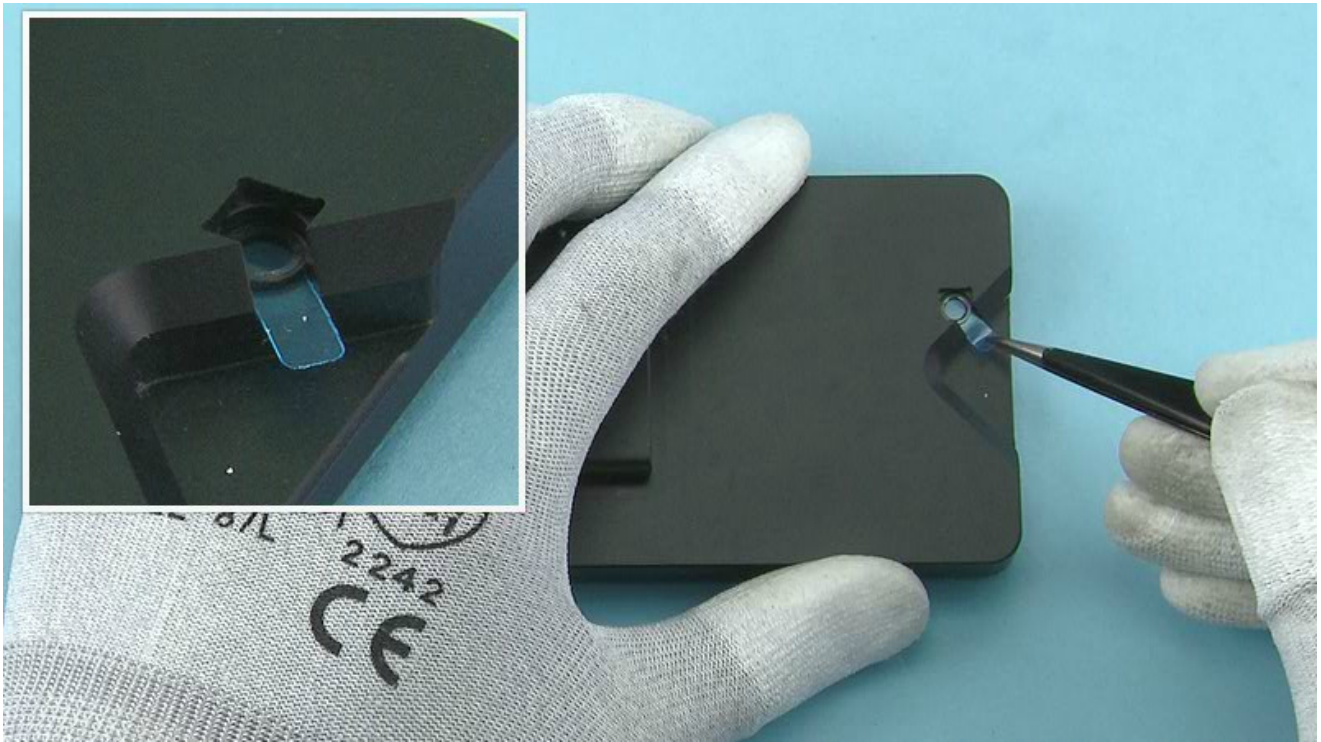
28) Lower down the ENGINE BOARD and press to attach the shown clip.



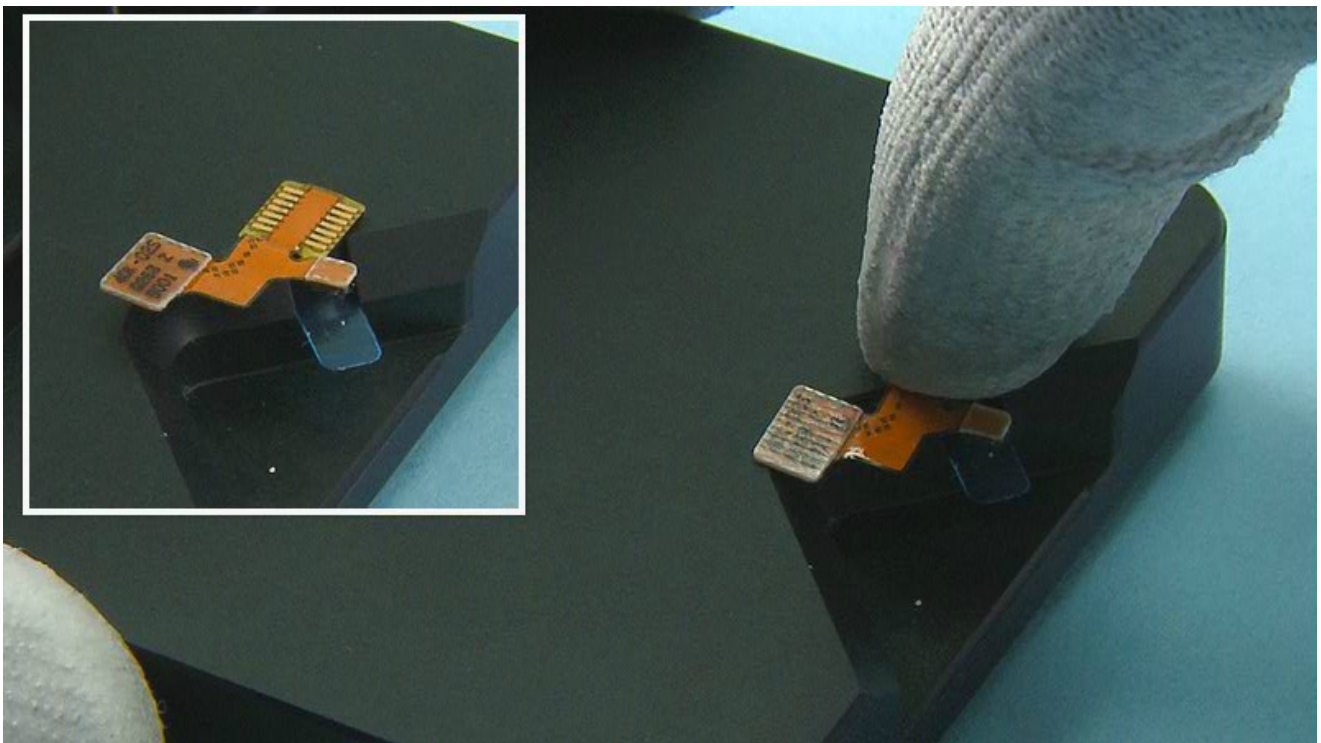
29) After assembling the ENGINE BOARD check the tactility of the side keys.



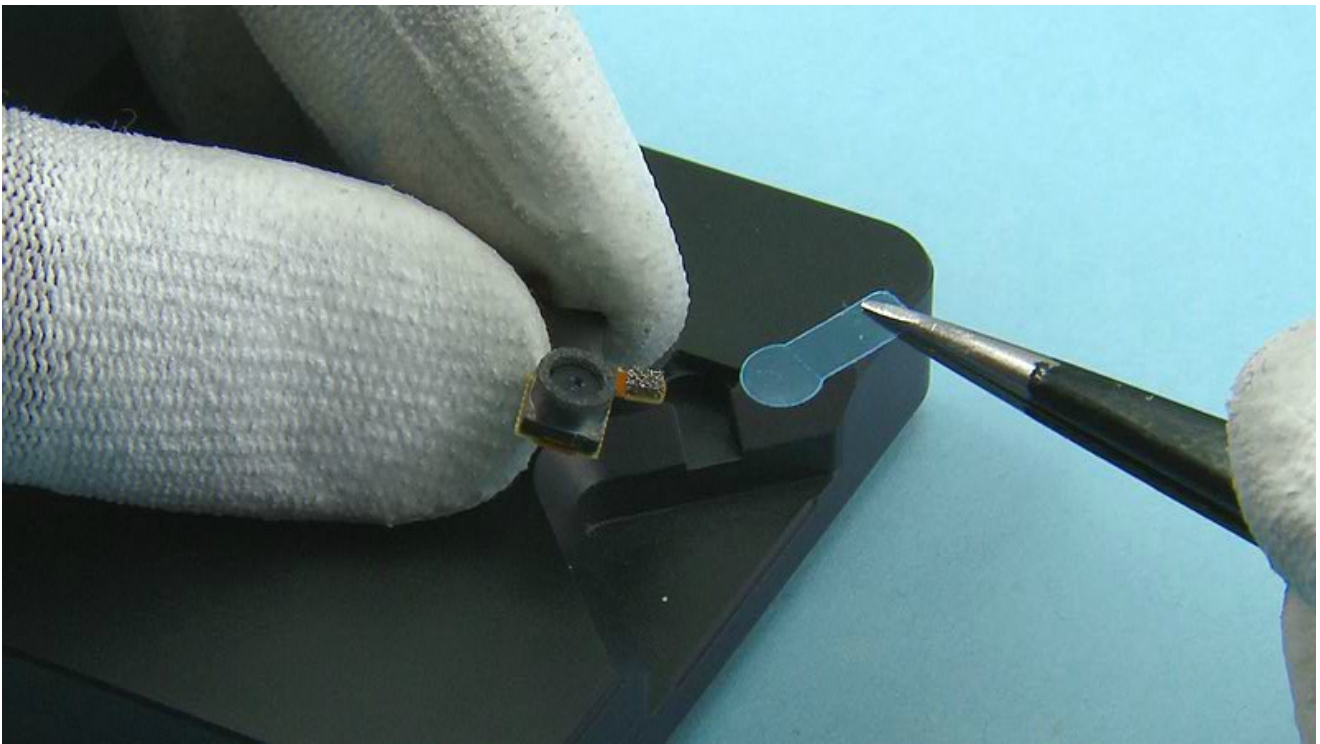
30) Place the LTE ADHESIVE to its place. Use the guiding lines on the ENGINE BOARD to get the right placement. Remove the protective film from the LTE ADHESIVE.



31) Place the SKYPE CAMERA GASKET to the shown slot on the SS-327 jig.



32) Place the SKYPE CAMERA on top of the gasket as shown and press it gently to activate the adhesive.



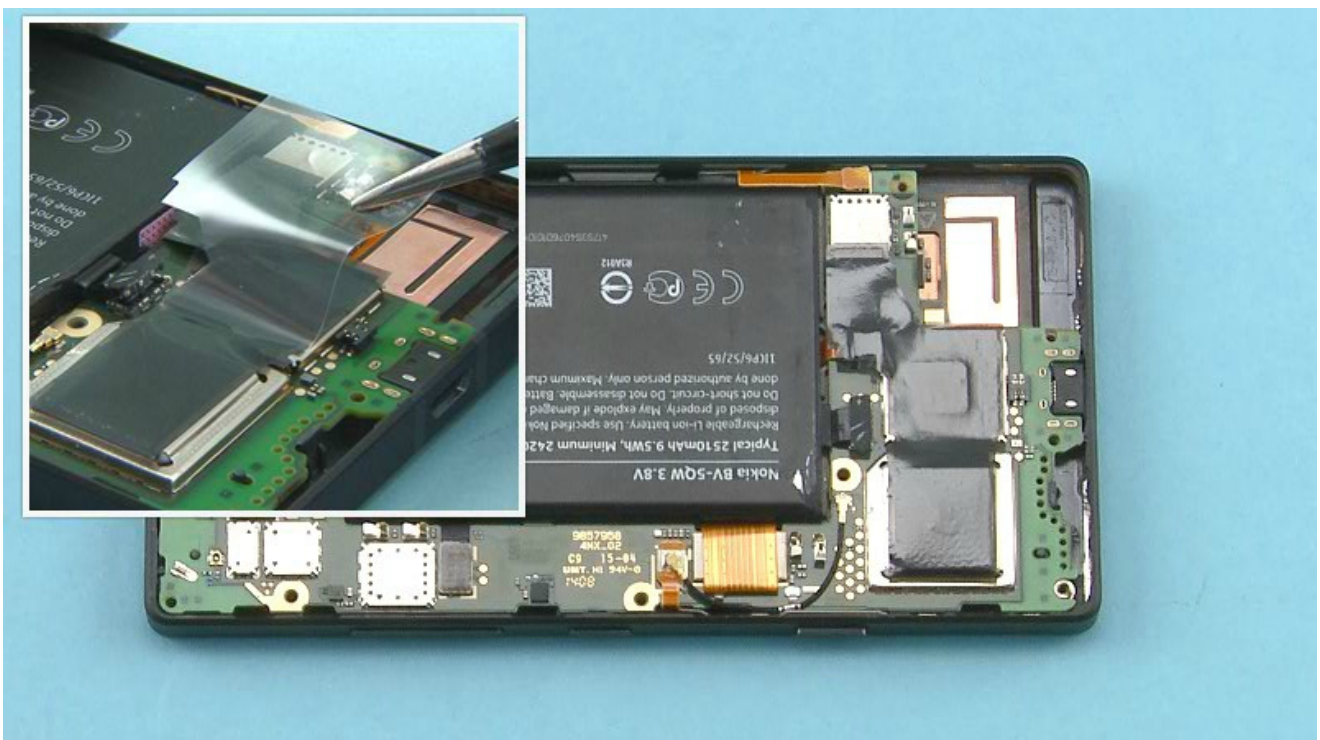
33) Remove the SKYPE CAMERA from the jig and remove the protective film from the SKYPE CAMERA GASKET.



34) Place the HEAT SPREADER on the ENGINE BOARD as shown. Use the edges of the shielding lids to get the right alignment.



35) Press all around the HEAT SPREADER to activate the adhesive.



36) Remove the protective film and gently press all around the HEAT SPREADER again to make sure its properly attached.



37) Fasten the ten TORX+ SIZE 4 screws in the order shown to the torque of 13 Ncm.



38) Fasten the TORX+ SIZE 4 screw to the top of the BATTERY CONNECTOR STRAP to the torque of 13 Ncm.



39) Assemble the BACK COVER to the UI ASSEMBLY bottom end first.

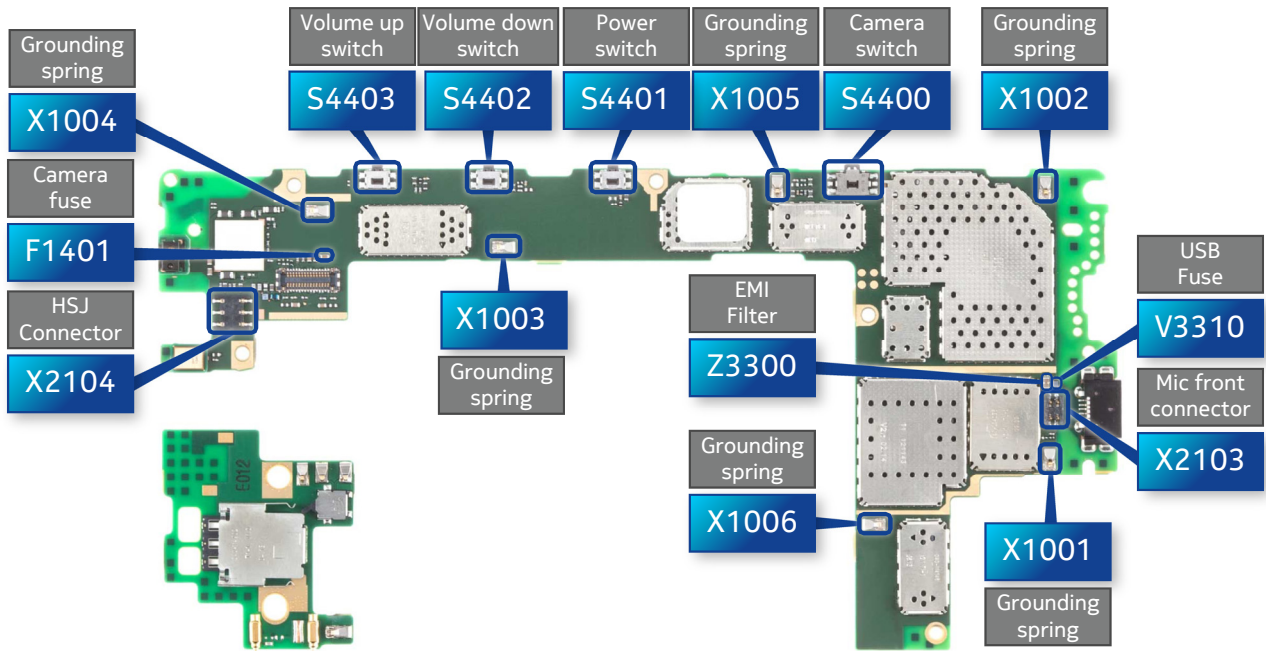


40) Press together the top end.

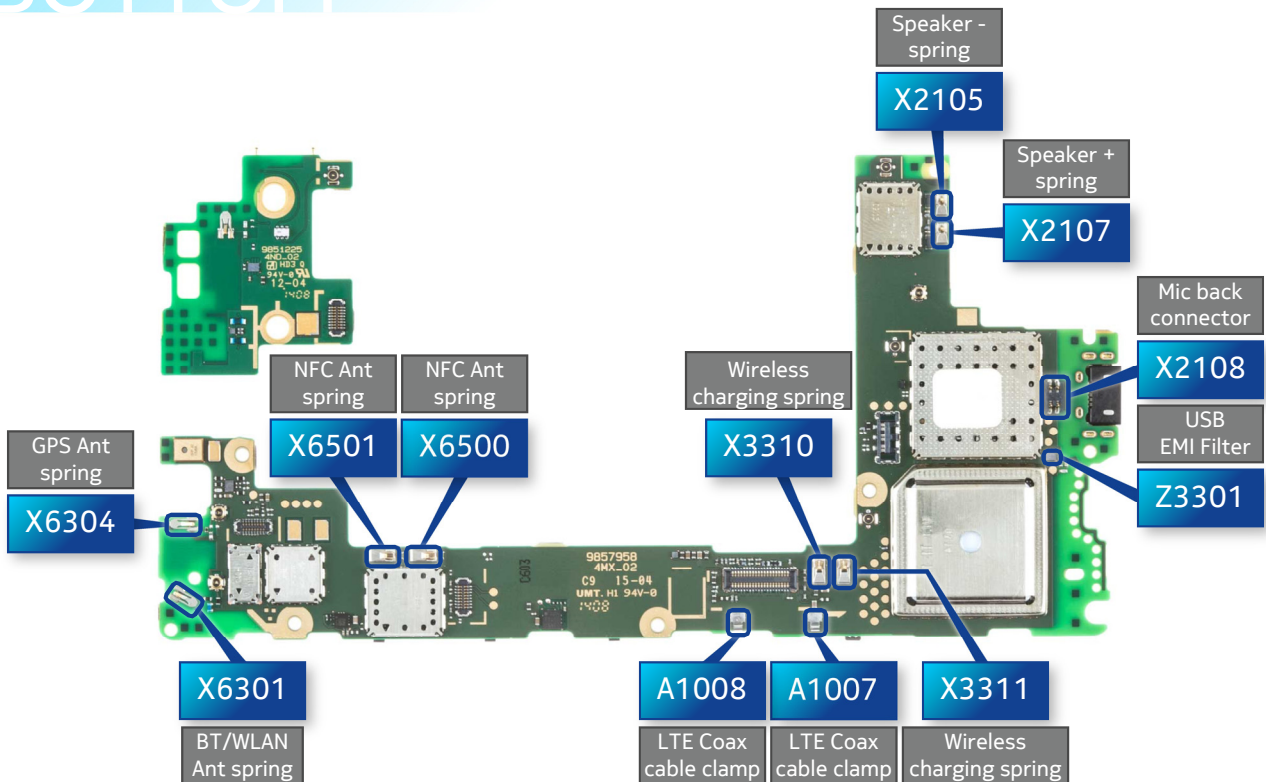


41) Then press together all the other sides of the device to get the BACK COVER completely attached.

TOP



BOTTOM





CA-190CD Service cable



AC-60 Fast USB charger



SS-311 Back cover release tool



SS-319 RF cable
disassembly/assembly tool

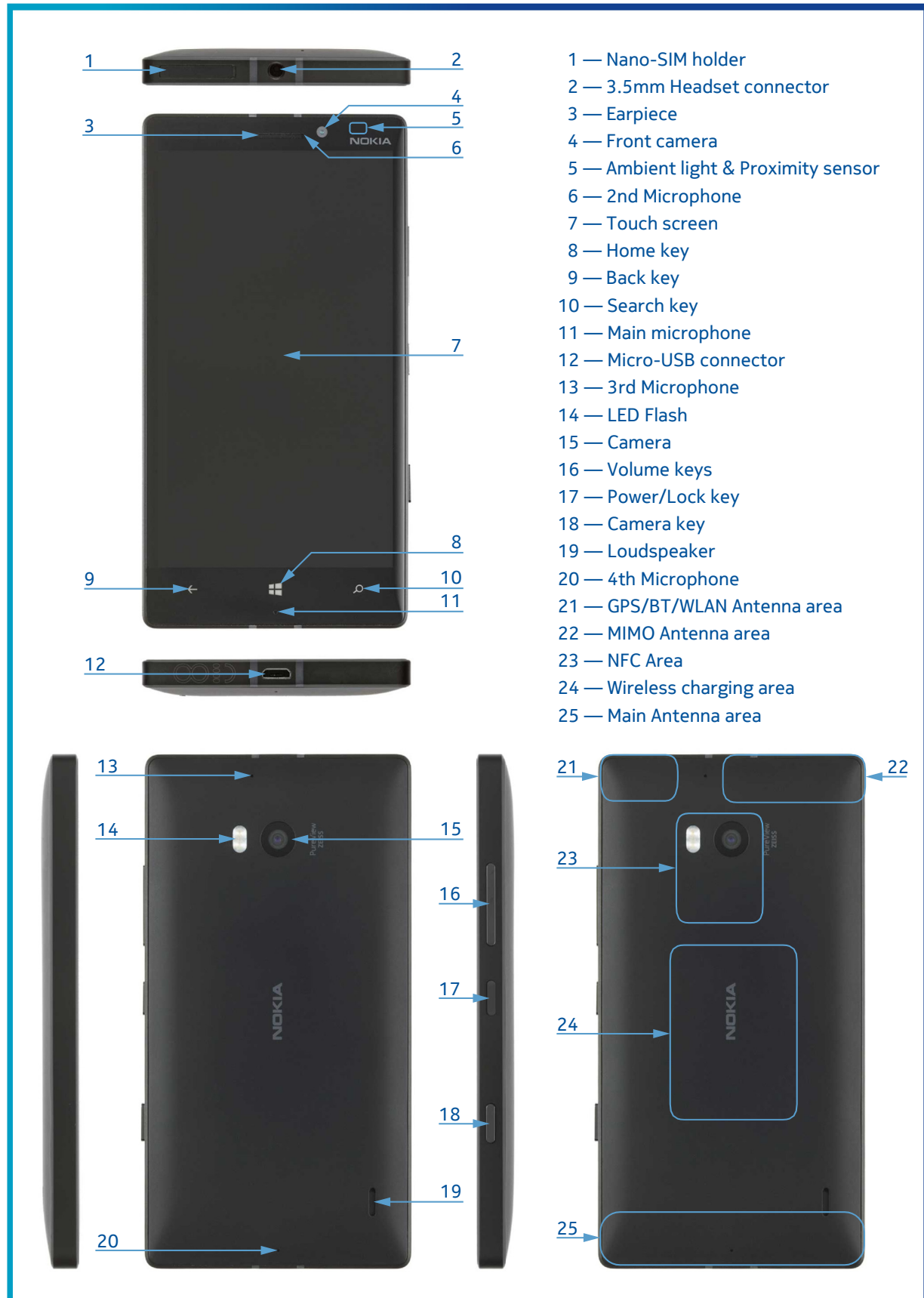


SS-327 Flex assembly jig

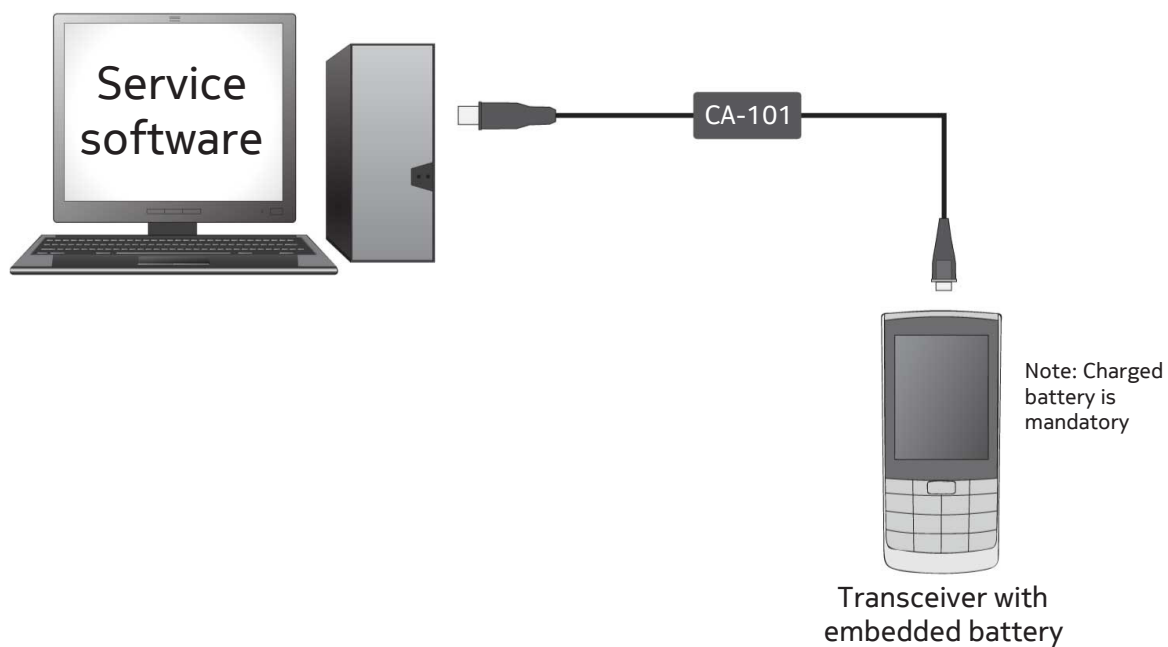


Nokia Standard Toolkit (v2)

For more information, refer to the Service Bulletin (SB-011) on Nokia Online. Supplier or manufacturer contacts for tool re-order can be found in "Recommended service equipment" document on Nokia Online.



Flashing concept



Hardware reset

If the phone hardware is jammed, you should first recommend that the consumer performs a hardware reset. The hardware reset does not reset the Windows Live ID or remove any consumer data. Because the consumer cannot remove the battery to reset the phone the phone has a special electronic circuit which cuts the phone power when power key is pressed for 10-15 seconds.

To perform the hardware reset, press and hold the Power key for about 10-15 seconds until a short vibration is felt. The phone should restart by itself.

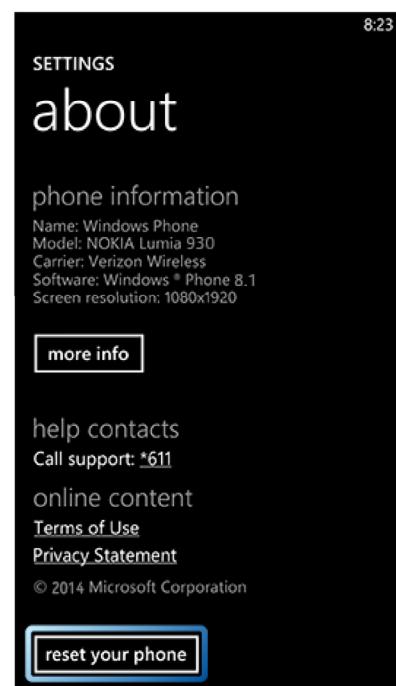


Software / operating system (OS) reset

The software / operating system (OS) reset returns the phone to its out-of-the-box state. Note that this procedure erases all consumer data! Always first try to perform a hardware reset.

Option 1: About menu

- Use this option if the consumer knows the lock code
- This option warns the consumer about data loss!
- Tap **Settings > About > reset your phone**



Option 2: Hardware key combination

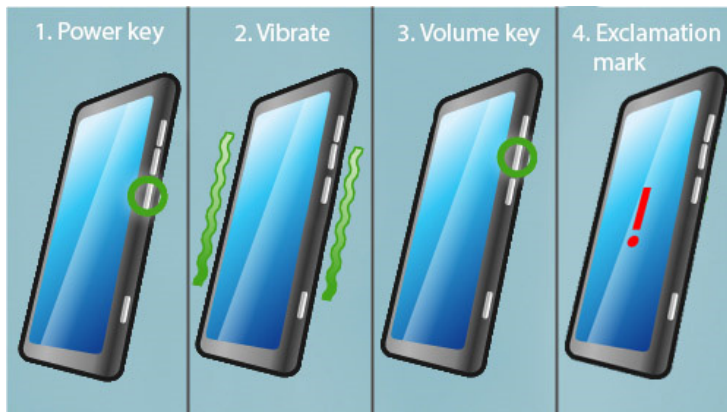
- Use this option if the phone is locked and the consumer does not know the code
- Note: no warning about data loss!
- Do not advertise this feature to consumers!

Follow next steps to perform OS reset with phone keys.

Step 1

Make sure the phone is turned Off.

1. Press and hold the power key
2. Phone vibrates (release the power key)
3. Press and hold the volume down key
4. Exclamation mark is shown on the screen (release the volume down key)



Step 2

Input the following key combination:

1. Volume up
2. Volume down
3. Power
4. Volume down



Step 3

The phone will reset and boot up automatically

